

Doc. No.	Revision	Date	Page
730-017100-00	A1		1 of 30

Service Manual

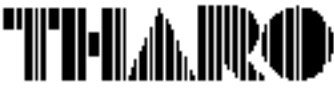
V-426 and V-433 Thermal Transfer Printer



Doc. No.	Revision	Date	Page
730-017100-00	A1		2 of 30

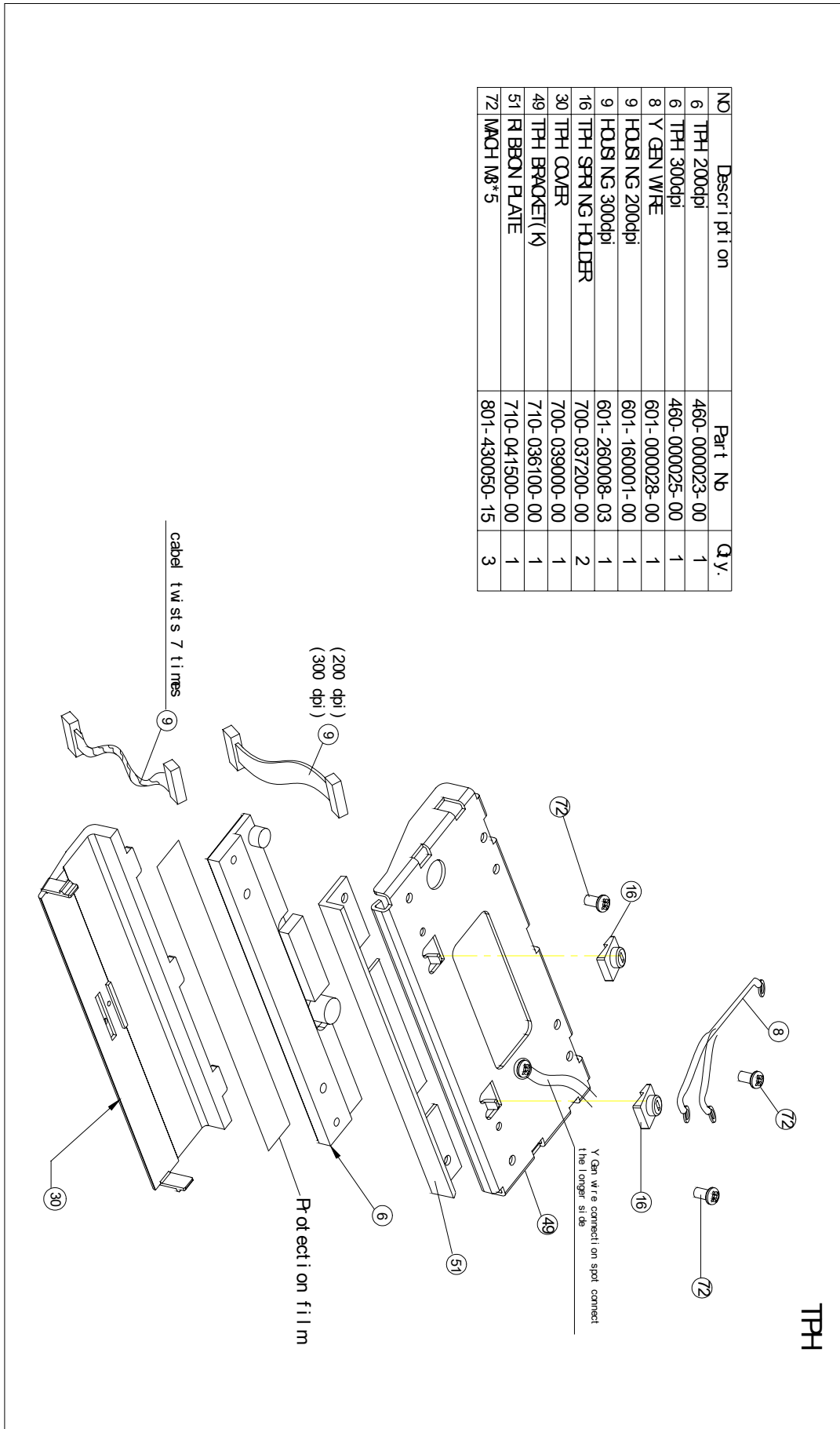
Contents

V-426 / V-433 TPH	3
MAIN BOARD BASE ASSEMBLY 1	4
MAIN BOARD BASE ASSEMBLY 1-1	5
MAIN BOARD BASE ASSEMBLY 2D	6
MAIN BOARD BASE ASSEMBLY 3	7
MAIN BOARD BASE ASSEMBLY 4	8
MAIN BOARD BASE ASSEMBLY 5	9
MAIN BOARD BASE ASSEMBLY 6	10
PRINTER STAND ASSEMBLY 1	11
PRINTER STAND ASSEMBLY 2	12
PRINTER STAND ASSEMBLY 3	13
BOTTOM COVER ASSEMBLY	14
MECHANISM ASSEMBLY	15
ONE-WAY CLUTCH HOLDER ASSEMBLY	16
TOP & BOTTOM COMPARTMENT ASSEMBLY	17
TOP COVER & MECHANISM ASSEMBLY	18
EXDLODED DIAGRAM	19
V-426 / V-433 Exploded Diagram (Shell)	19
Exploded Diagram (Mechanism)	22

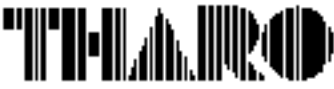


Doc. No.	Revision	Date	Page
730-017100-00	A1		3 of 30

V-426 / V-433 TPH



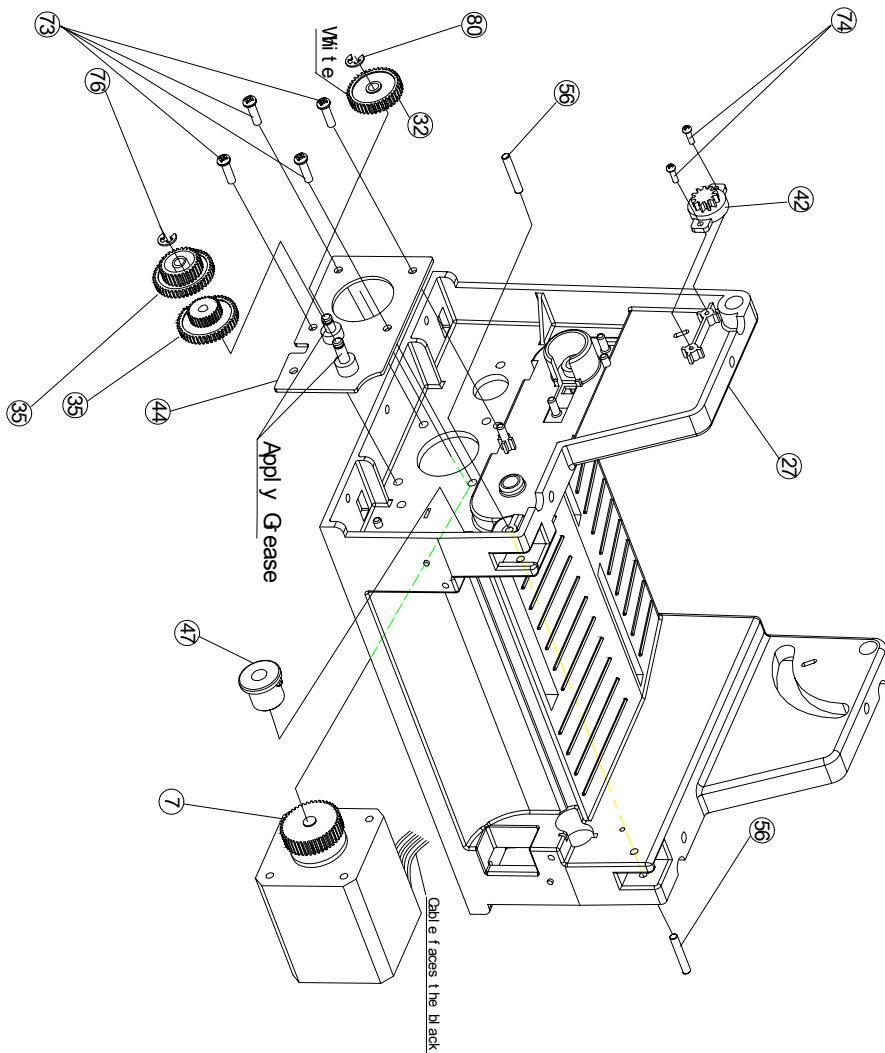
NO	Description	Part No	QTY.
6	TPH 200dpi	460-000023-00	1
6	TPH 300dpi	460-000025-00	1
8	Y GEN WIRE	601-000028-00	1
9	HOUSING 200dpi	601-160001-00	1
9	HOUSING 300dpi	601-260008-03	1
16	TPH SPRING HOLDER	700-037200-00	2
30	TPH COVER	700-039000-00	1
49	TPH BRACKET (R)	710-036100-00	1
51	IRON PLATE	710-041500-00	1
72	NACH M8*5	801-430050-15	3



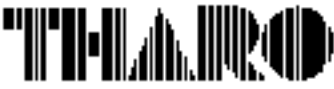
Doc. No.	Revision	Date	Page
730-017100-00	A1		4 of 30

MAIN BOARD BASE ASSEMBLY 1

NO	Description	Part No.	Qty.
7	Stepping Motor	462-030010-00	1
27	Base Frame	700-038500-00	1
32	Spur Gear 40T	701-000700-00	1
35	Double Gear 45/30T (200dpi)	701-001100-00	1
35	Double Gear 45/20T (300dpi)	701-001000-00	1
42	Torque Gear / PG-03A	703-029300-00	1
44	Motor Bracket (200dpi)	710-035500-00	1
44	Motor Bracket (300dpi)	710-035600-00	1
47	Bearing	710-035900-00	1
58	Hook Pin	711-036700-00	2
74	Tapping Screw M2*6	820-420060-25	2
73	Machine Screw M3*10	801-430100-15	4
80	E-RING $\phi 3.0 \times \phi 7.0 \times 0.6t/mm$	855-300706-00	2

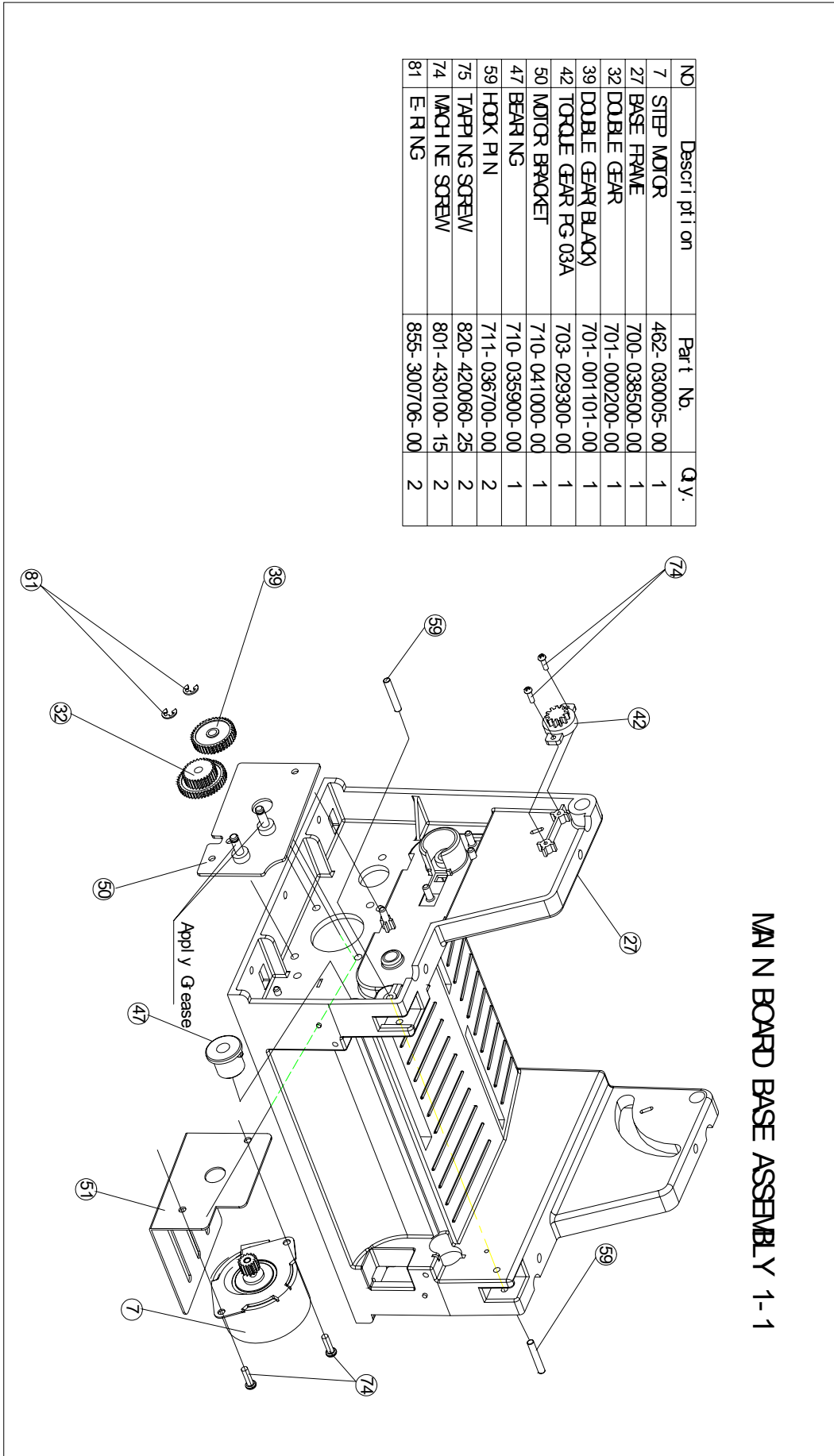


MAIN BOARD BASE ASSEMBLY 1

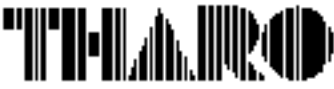


Doc. No.	Revision	Date	Page
730-017100-00	A1		5 of 30

MAIN BOARD BASE ASSEMBLY 1-1



MAIN BOARD BASE ASSEMBLY 1-1

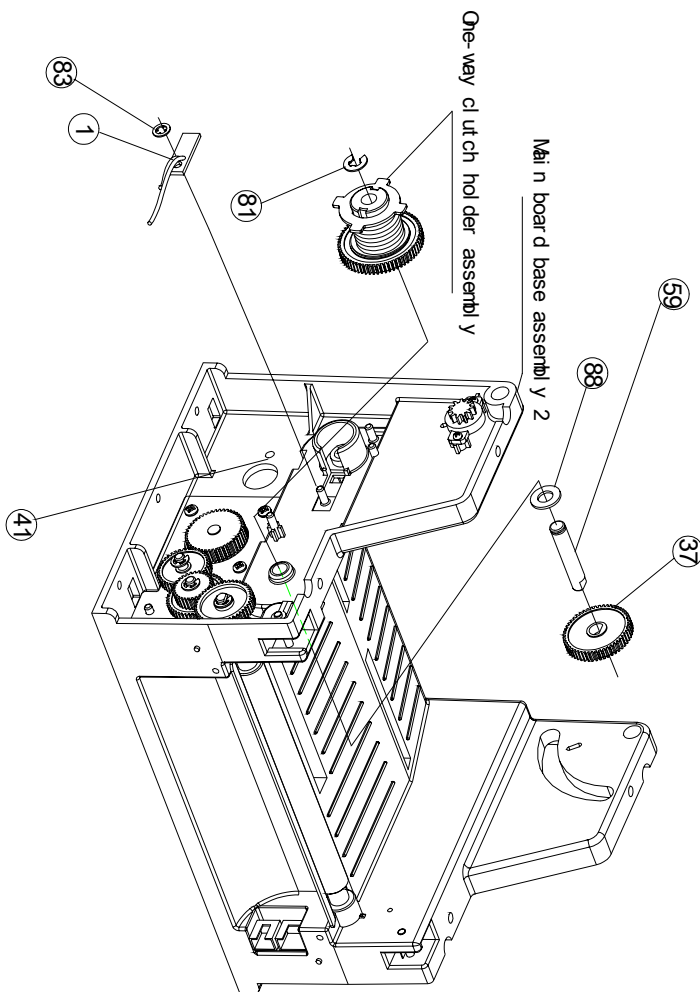


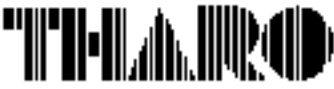
Doc. No.	Revision	Date	Page
730-017100-00	A1		7 of 30

MAIN BOARD BASE ASSEMBLY 3

NO	Description	Part No.	Qty.
1	Ribbon Sensor PCB Assy	160-000045-20	1
37	Spur Gear (Back) 52T	701-001301-00	1
59	Rewind Shaft	711-036800-00	1
81	E-RING $\phi 4.0 \times \phi 9.0 \times 0.6t/mm$	855-400906-00	2
83	E-RING $\phi 3.0 \times \phi 7.0 \times 0.5t/mm$	856-300705-00	1
88	PVC Washer	861-621010-XX	1
41	Cable Ties	703-012500-XX	1
	ONE-WAY CLUTCH HOLDER ASSEMBLY		1
	MAIN BOARD BASE ASSEMBLY 2		1

MAIN BOARD BASE ASSEMBLY 3



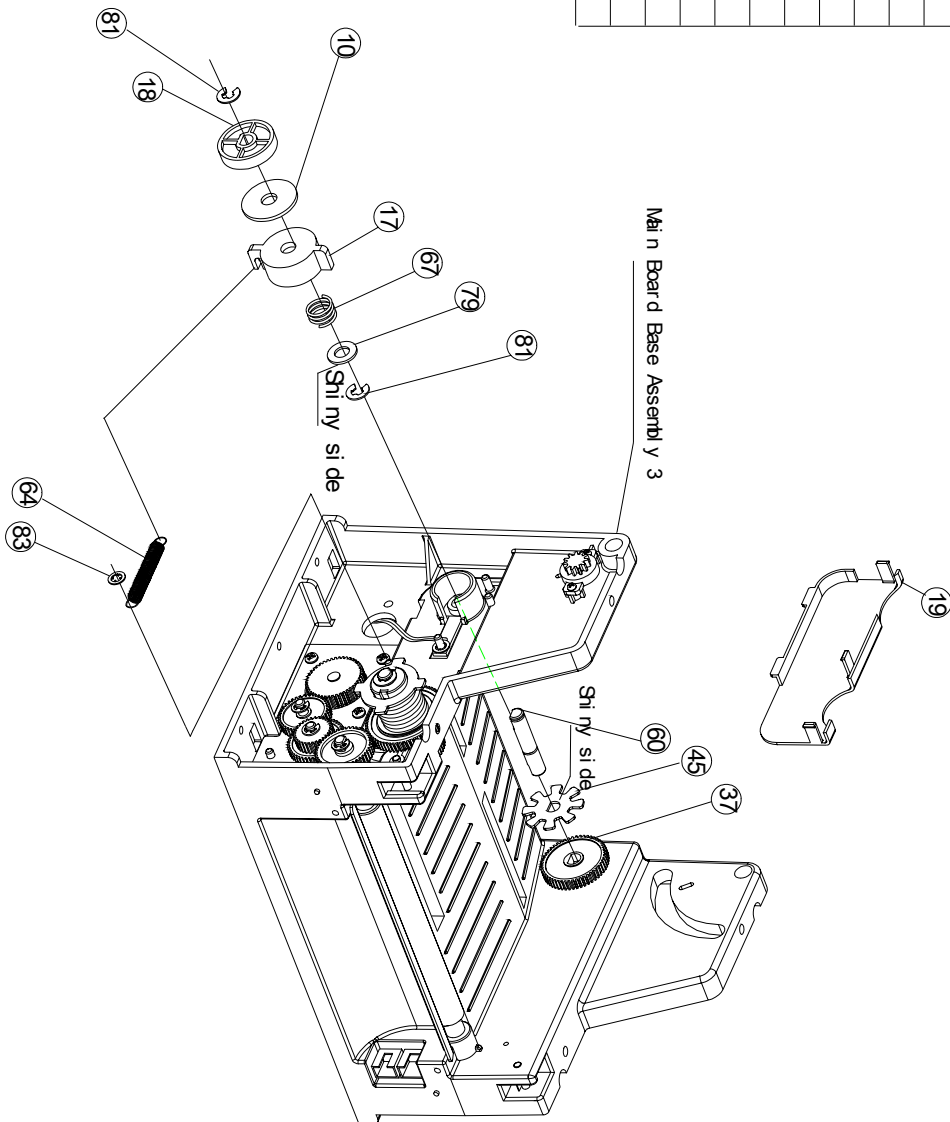


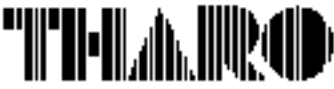
Doc. No.	Revision	Date	Page
730-017100-00	A1		8 of 30

MAIN BOARD BASE ASSEMBLY 4

MAIN BOARD BASE ASSEMBLY 4

NO	Description	Part Nb.	Qty.
10	Wool Fiber D20*6.2*1.0t	700-013200-00	1
17	Ribbon Retur'n Cap	700-037300-00	1
18	Friction Plate	700-037400-00	1
19	Gear Cover	700-037500-00	1
37	Spur Gear (Black) 52T	701-001301-00	1
45	Ribbon-Quit Plate(Spec 1.0t)	710-035700-00	1
60	Printing Frame	700-036900-00	1
64	Spring $\phi 4.0 \times 4.8 \times 65L$	712-025900-00	1
67	Compress Spring 10L	712-028800-00	1
79	Plane Washer	851-621310-00	1
81	ERNG $\phi 4.0 \times 9.0 \times 0.6t$ (BK)	855-400906-00	2
83	GRNG $\phi 3.0 \times \phi 7.0 \times 0.5t/mm$	856-300705-00	2
	Main Board Base Assembly 3		1

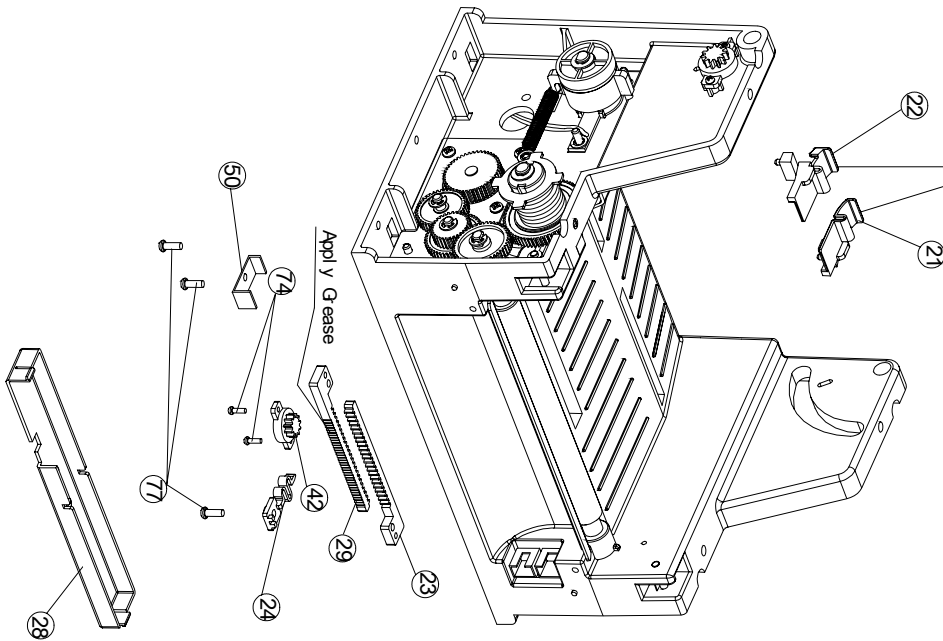




Doc. No.	Revision	Date	Page
730-017100-00	A1		9 of 30

MAIN BOARD BASE ASSEMBLY 5

NO	Description	Part No.	Qty.
21	Label Guide / R	700-037700-00	1
22	Label Guide / L	700-037800-00	1
23	Label Guide Gear Rack	700-037900-00	1
24	Gear Support	700-038000-00	1
28	Gear Rack Cover	700-038800-00	1
29	Label Guide Gear Rack Lock	700-038900-00	1
31	Sensor Dust Cov	700-041700-00	1
42	Torque Gear	703-029300-00	1
50	Gear Rack Holder	710-040400-00	1
74	Tapping Screw M2*6	820-420060-25	2
77	Tapping M2*8	820-430080-25	3
	Main board base assembly 4		1



1. Adjust label guide to the center and tighten torque gear.
2. Adjust label guide to the center and install gear rack cover.

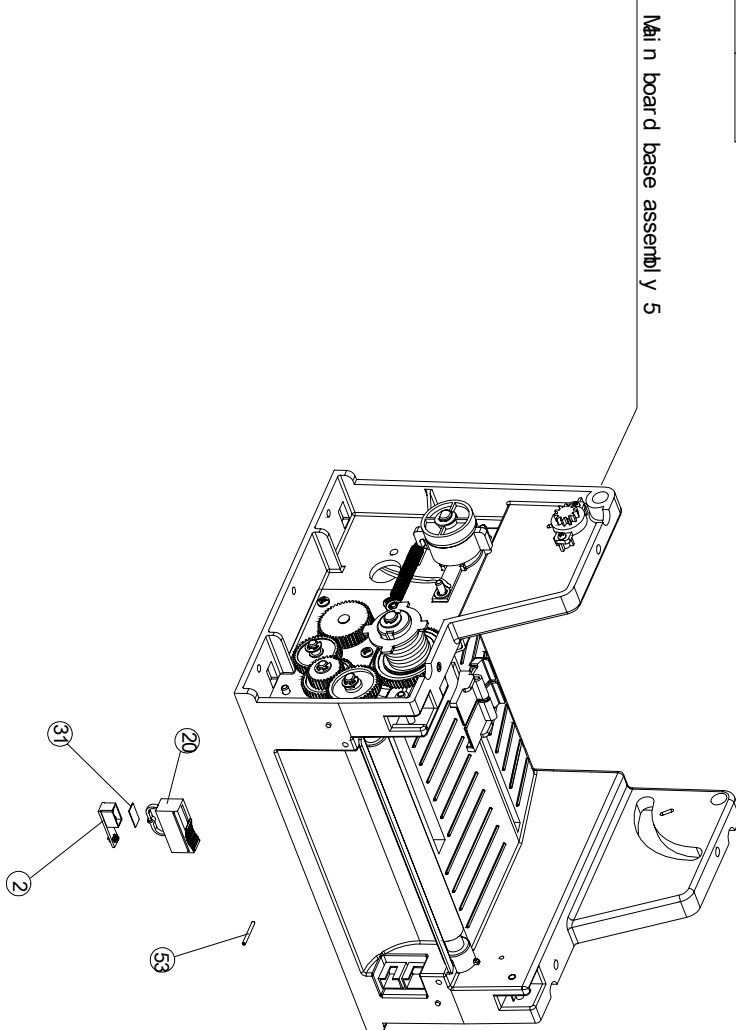
MAIN BOARD BASE ASSEMBLY 5



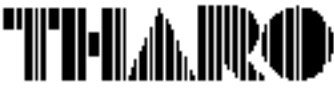
Doc. No.	Revision	Date	Page
730-017100-00	A1		10 of 30

MAIN BOARD BASE ASSEMBLY 6

NO	Description	Part No.	Qty.
2	Label Sensor PCB	160-000128-00	1
20	Sensor Case	700-037600-00	1
31	Sensor Dust Cov	700-041700-00	1
53	PN SLS	711-020200-00	1
Main board base assembly 5			1



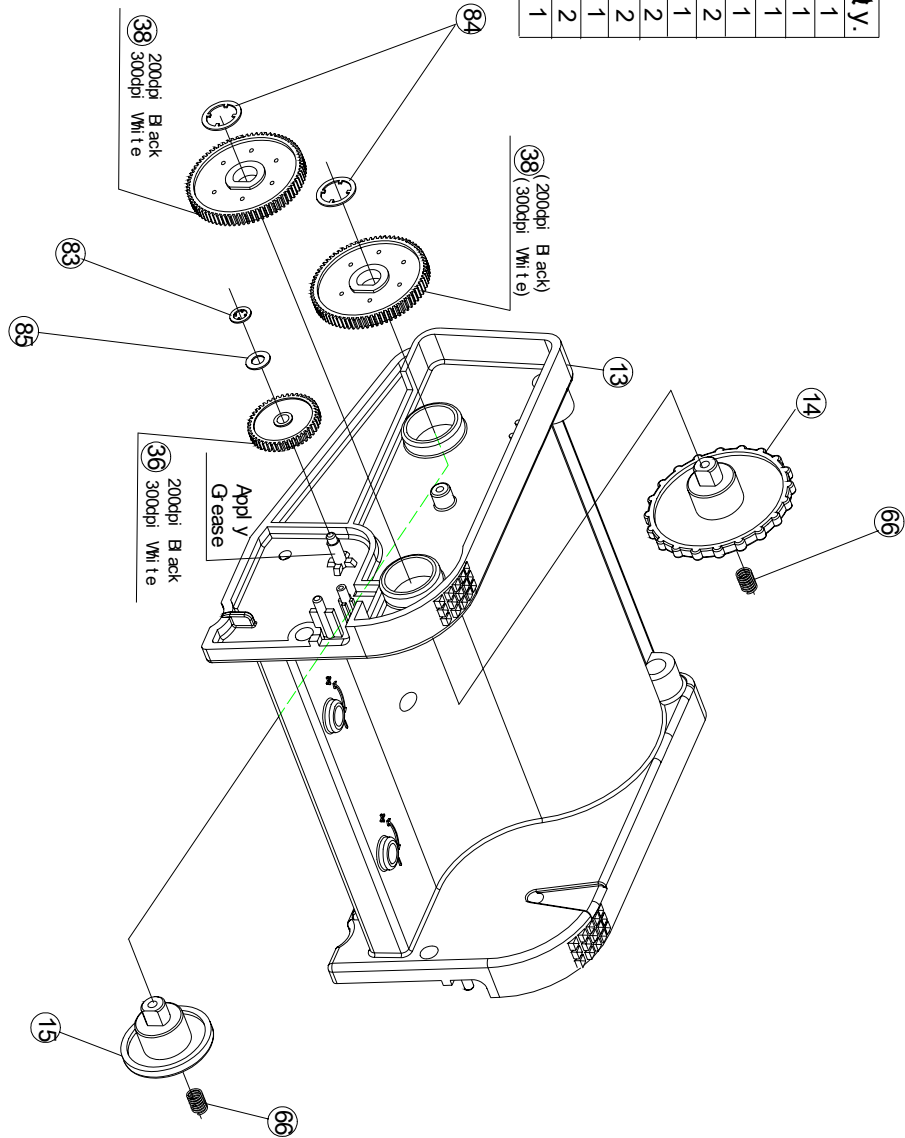
MAIN BOARD BASE ASSEMBLY 6



Doc. No.	Revision	Date	Page
730-017100-00	A1		11 of 30

PRINTER STAND ASSEMBLY 1

NO	Description	Part No.	Qty.
13	FRONT FRAME	700-036900-00	1
14	RIBBON REWIND WHEEL	700-037000-00	1
15	RIBBON SUPPLY WHEEL	700-037100-00	1
36	DOUBLE GEAR (BLACK)	701-001101-00	1
38	GEAR 75T(BLACK)	701-003001-00	2
36	DOUBLE GEAR	701-001100-00	1
38	GEAR 75T(WHITE)	701-003000-00	2
66	RIBBON SUPPORT SPRING	712-028700-00	2
83	O-RING $\phi 3.0 \times \phi 7.0 \times 0.5t/mm$	856-300705-00	1
84	O-RING $\phi 8.0 \times \phi 13.0 \times 0.25t/mm$	856-801302-00	2
85	M/LON $\phi 4.0 \times \phi 8.0 \times 0.5t/mm$	858-400805-00	1



PRINTER STAND ASSEMBLY 1

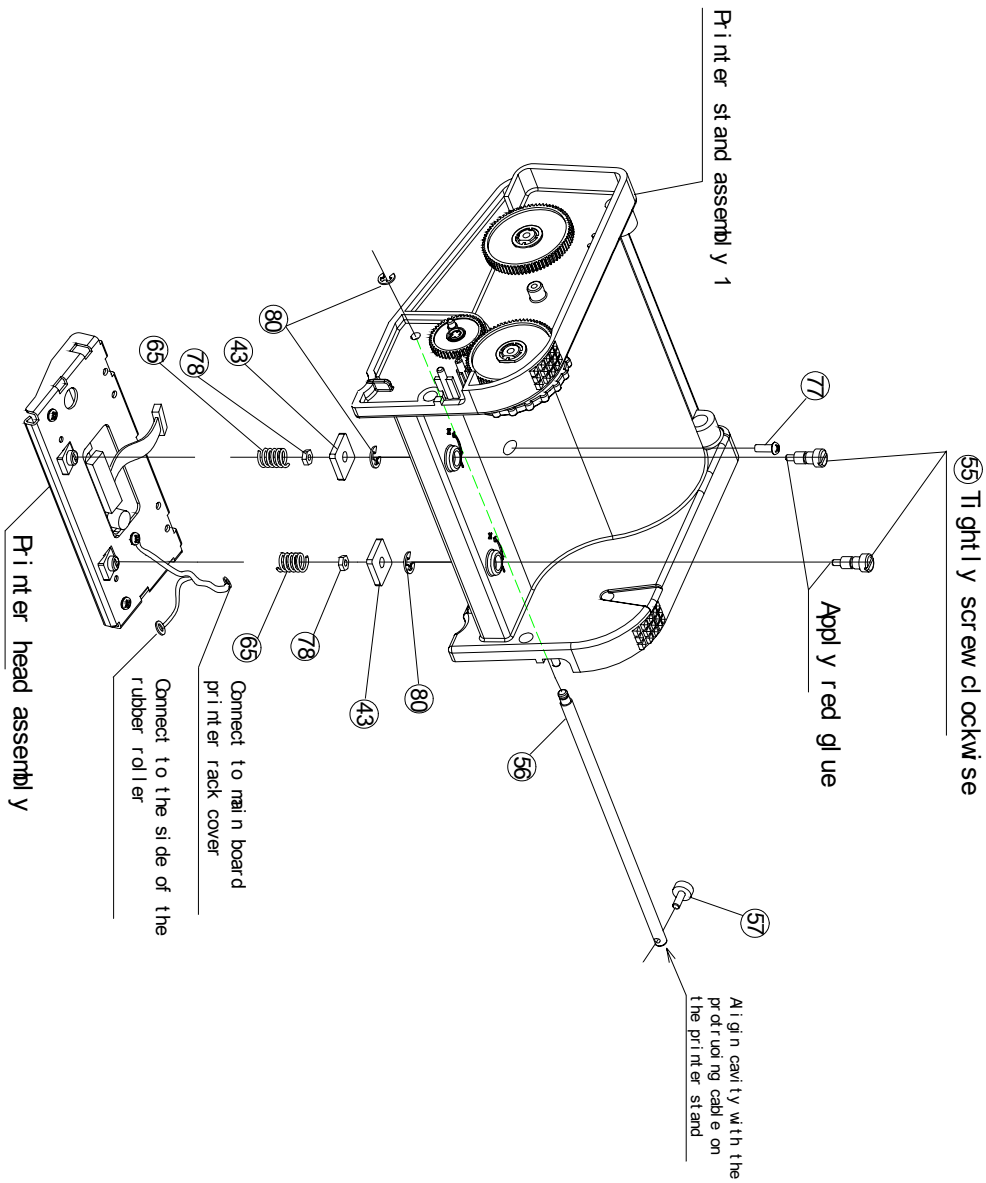


Doc. No.	Revision	Date	Page
730-017100-00	A1		12 of 30

PRINTER STAND ASSEMBLY 2

PRINTER STAND ASSEMBLY 2

NO	Description	Part No.	Qty.
43	TPH PADH Plate	710-035100-00	2
55	TPH ADJ Screw	711-036400-00	2
56	TPH SPART	711-036500-00	1
57	TPH L-ADJ Screw	711-036600-00	1
65	TPH Spring	712-028600-00	2
77	TAPPING M8*8	820-430080-25	1
78	NUT / N / M2.3*4.5*P0.4*1.8t	841-023451-10	2
80	E-RING $\phi 5.0 * \phi 7.0 * 0.5t / mm$	855-300706-00	3
	Printer head assembly 1		1
	Printer stand assembly 1		1

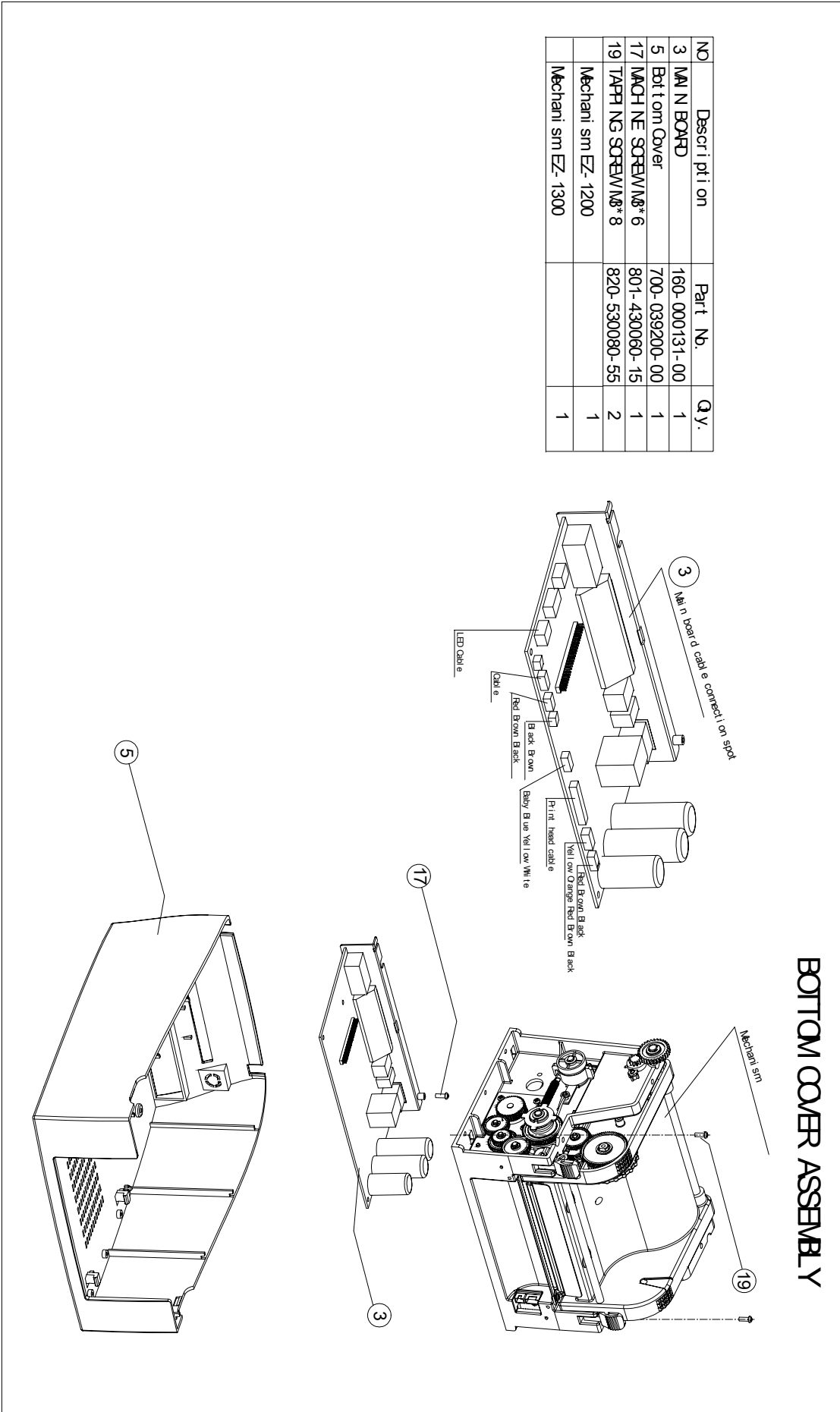


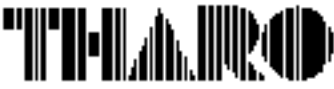


Doc. No.	Revision	Date	Page
730-017100-00	A1		14 of 30

BOTTOM COVER ASSEMBLY

NO	Description	Part No.	Qty.
3	MAIN BOARD	160-000131-00	1
5	Bottom Cover	700-039200-00	1
17	MACHINE SCREW/M8*6	801-430060-15	1
19	TAPPING SCREW/M8*8	820-530080-55	2
	Mechanism EZ-1200		1
	Mechanism EZ-1300		1

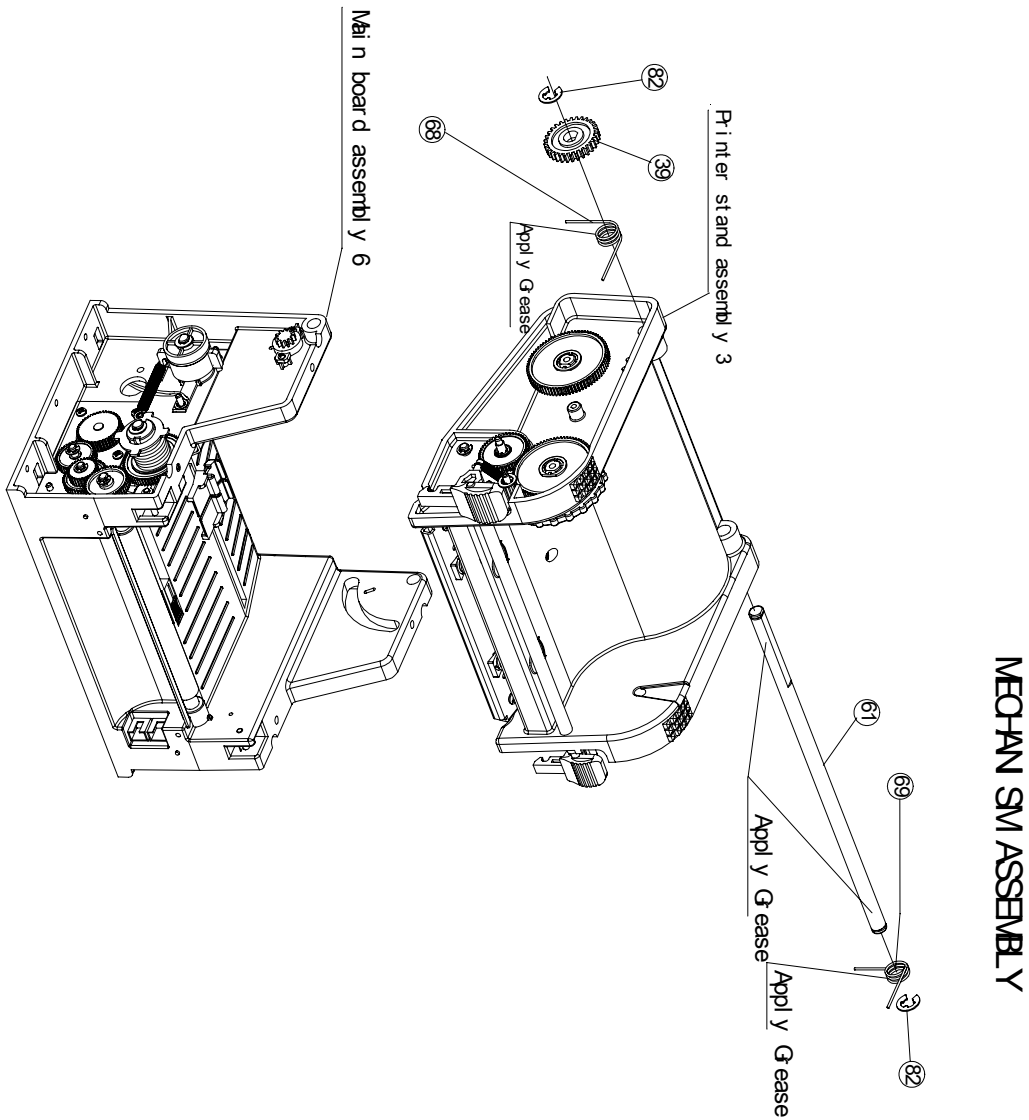


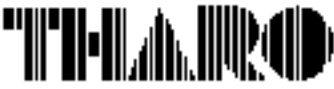


Doc. No.	Revision	Date	Page
730-017100-00	A1		15 of 30

MECHANISM ASSEMBLY

NO	Description	Part No.	Qty.
39	Stupper Gear (White)	701-003100-00	1
61	Print Frame Shaft	711-037000-00	1
68	Print Frame Support Spring / L	712-028900-00	1
69	Print Frame Support Spring / R	712-029000-00	1
82	E-RINGS	855-501106-00	2
	Main board assembly 6		1
	Printer stand assembly 3		1
	Cable Ties	703-012500-00	1



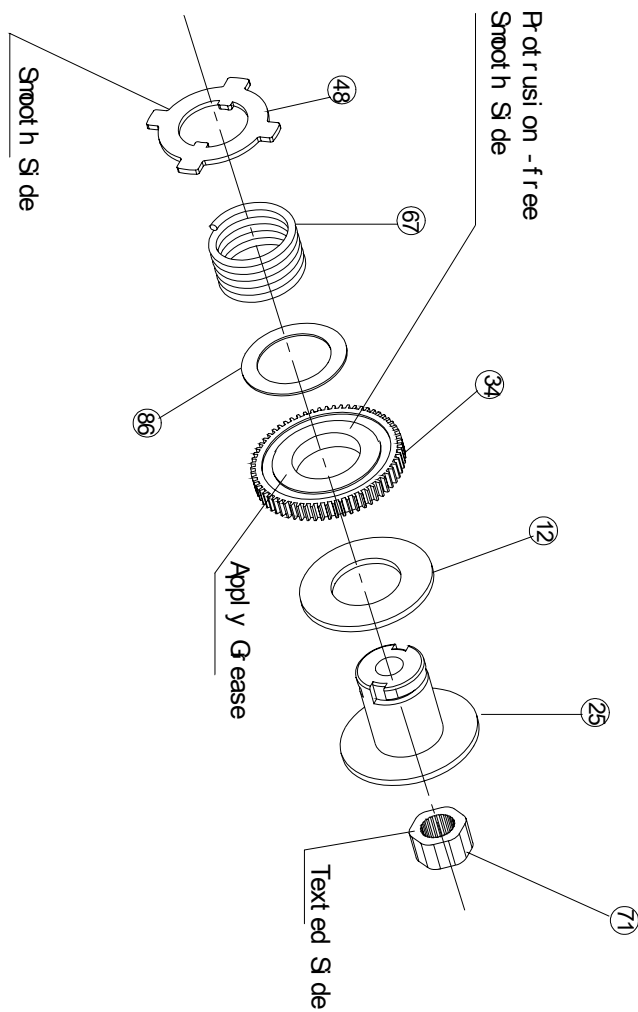


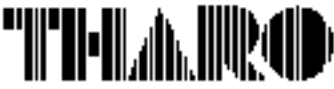
Doc. No.	Revision	Date	Page
730-017100-00	A1		16 of 30

ONE-WAY CLUTCH HOLDER ASSEMBLY

NO	Description	Part No.	Qty.
12	W01 FIBER D24*15.3*2.0t	700-027500-00	1
25	ONE-WAY CLUTCH HOLDER	700-038300-00	1
34	GEAR 64T* M0.5*4.0t	701-000900-01	1
48	HOLDER PLATE	710-036000-00	1
67	COMPRESS SPRING 10L	712-028800-00	1
71	ONE-WAY CLUTCH	713-020400-00	1
86	GRAPHITE WASHER φ23	860-000001-00	1

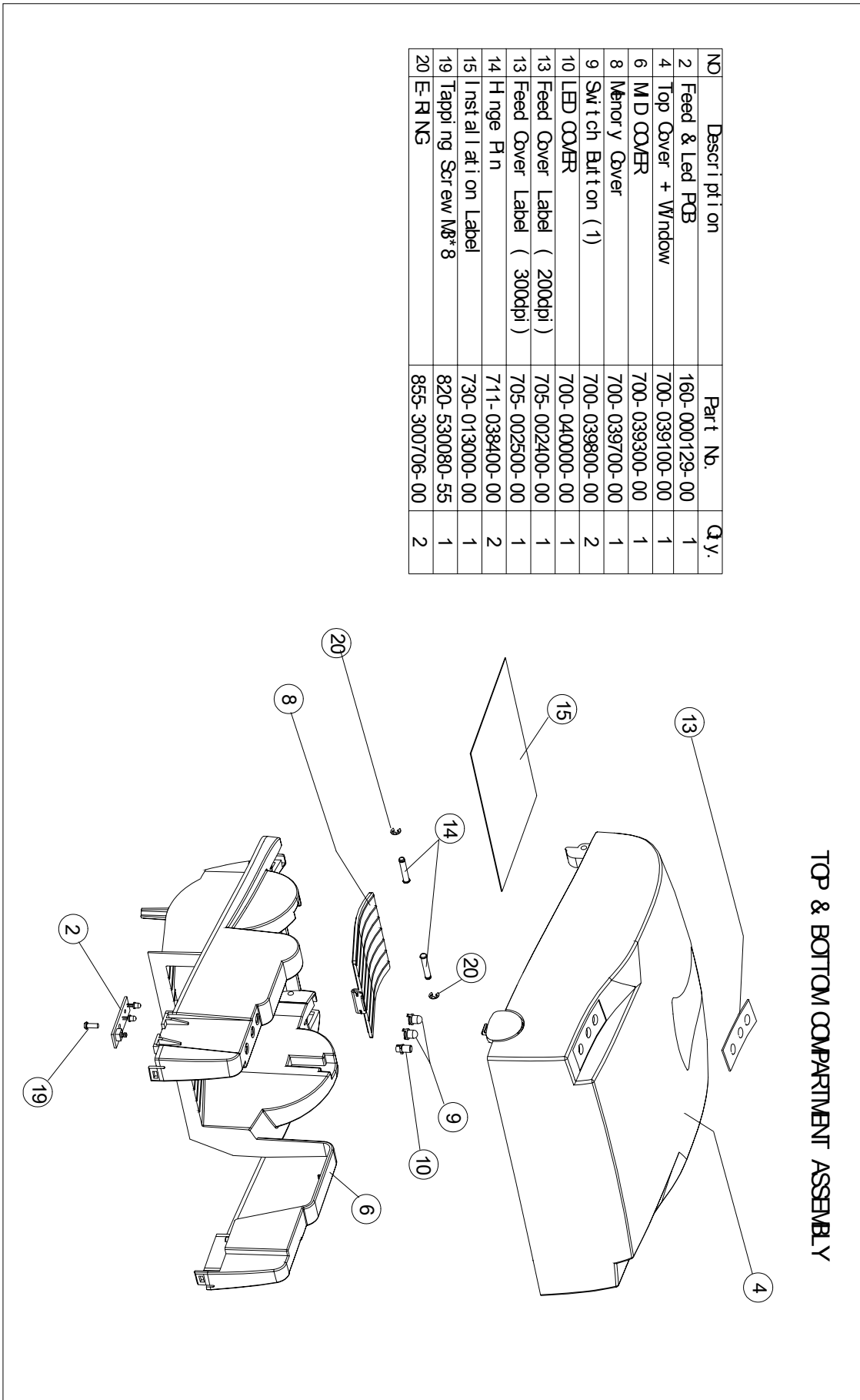
ONE-WAY CLUTCH HOLDER ASSEMBLY





Doc. No.	Revision	Date	Page
730-017100-00	A1		17 of 30

TOP & BOTTOM COMPARTMENT ASSEMBLY



NO	Description	Part No.	Qty.
2	Feed & Led PCB	160-000129-00	1
4	Top Cover + Window	700-039100-00	1
6	MD COVER	700-039300-00	1
8	Memory Cover	700-039700-00	1
9	Switch Button (1)	700-039800-00	2
10	LED COVER	700-040000-00	1
13	Feed Cover Label (200dpi)	705-002400-00	1
13	Feed Cover Label (300dpi)	705-002500-00	1
14	Hinge Pin	711-038400-00	2
15	Installation Label	730-013000-00	1
19	Tapping Screw M8*8	820-530080-55	1
20	E-RING	855-300706-00	2

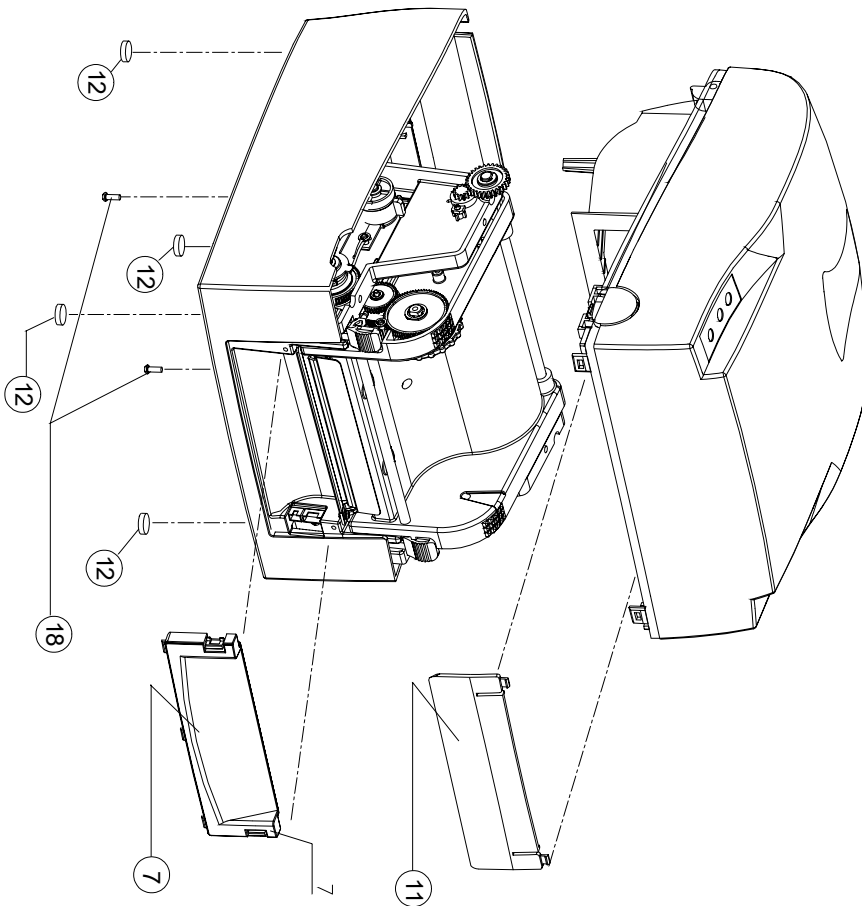
TOP & BOTTOM COMPARTMENT ASSEMBLY



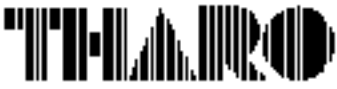
Doc. No.	Revision	Date	Page
730-017100-00	A1		18 of 30

TOP COVER & MECHANISM ASSEMBLY

NO	Description	Part No.	Qty.
7	Bottom Panel	700-09600-00	1
11	Tear-Off Plate	700-040200-00	1
12	Rubber Foot	703-005800-00	4
18	TAP SCREWS* 12	820-430120-15	2



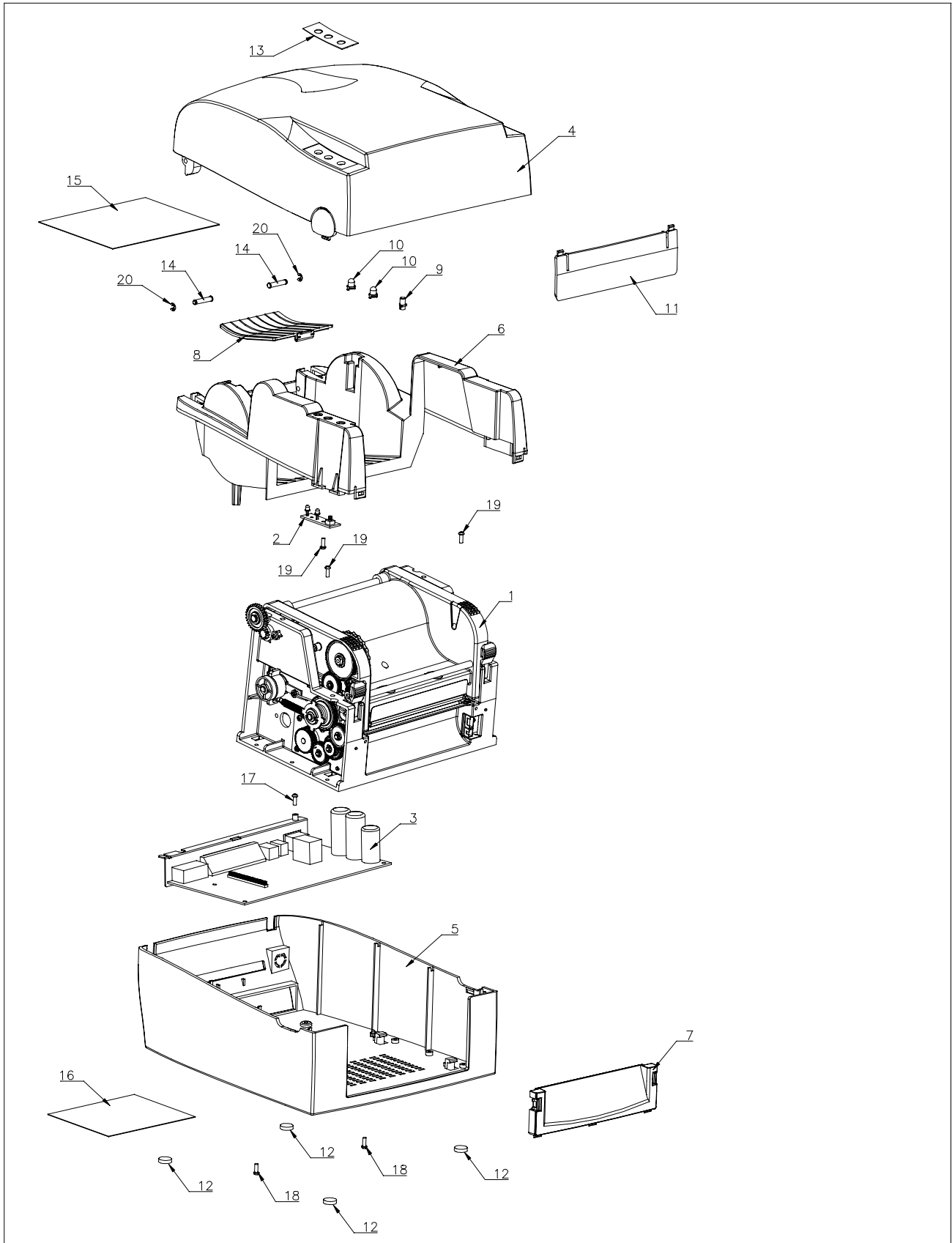
TOP COVER & MECHANISM ASSEMBLY

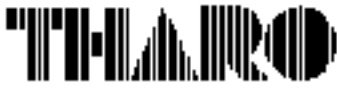


Doc. No.	Revision	Date	Page
730-017100-00	A1		19 of 30

EXPLODED DIAGRAM

V-426 / V-433 Exploded Diagram (Shell)

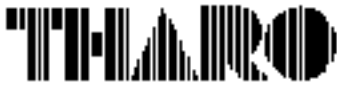




Doc. No.	Revision	Date	Page
730-017100-00	A1		20 of 30

PARTS LIST TABLE

MODEL : V-426		Data : 9-23-03	REV.A	DWG No: 904-000171-00	
Item	No.	Part Name		Qty.	Remarks
		V-426 Exploded Diagram 200 dpi (Shell)			
1	131-EZ1200-00	Mechanism (200dpi) / V-426		1	
2	160-000129-00	Feed & LED PCB Assembly		1	
3	160-000131-00	Main PCB Assembly		1	
4	700-039100-00	Top Cover + Window		1	
5	700-039200-00	Bottom Case		1	
6	700-039300-00	Mid. Cover		1	
7	700-039600-00	Bottom Panel		1	
8	700-039700-00	Memory Cover		1	
9	700-039800-00	Switch Button (1)		1	
10	700-040000-00	LED Cover		2	
11	700-040200-00	Tear-Off Plate		1	
12	703-005800-00	Rubber Foot		4	
13	705-002400-00	Feed Cover Label (Blue) / 200dpi		1	
14	711-038400-00	Hinge Pin		2	
15	730-013000-00	Installation Label		1	
16	731-013100-00	Rating Label		1	
17	801-430060-15	Mech. / P / NI / M3*6 (SPW Only)		1	
18	820-430120-15	Tapping Screw / P / NI / 3*12		2	



Doc. No.	Revision	Date	Page
730-017100-00	A1		21 of 30

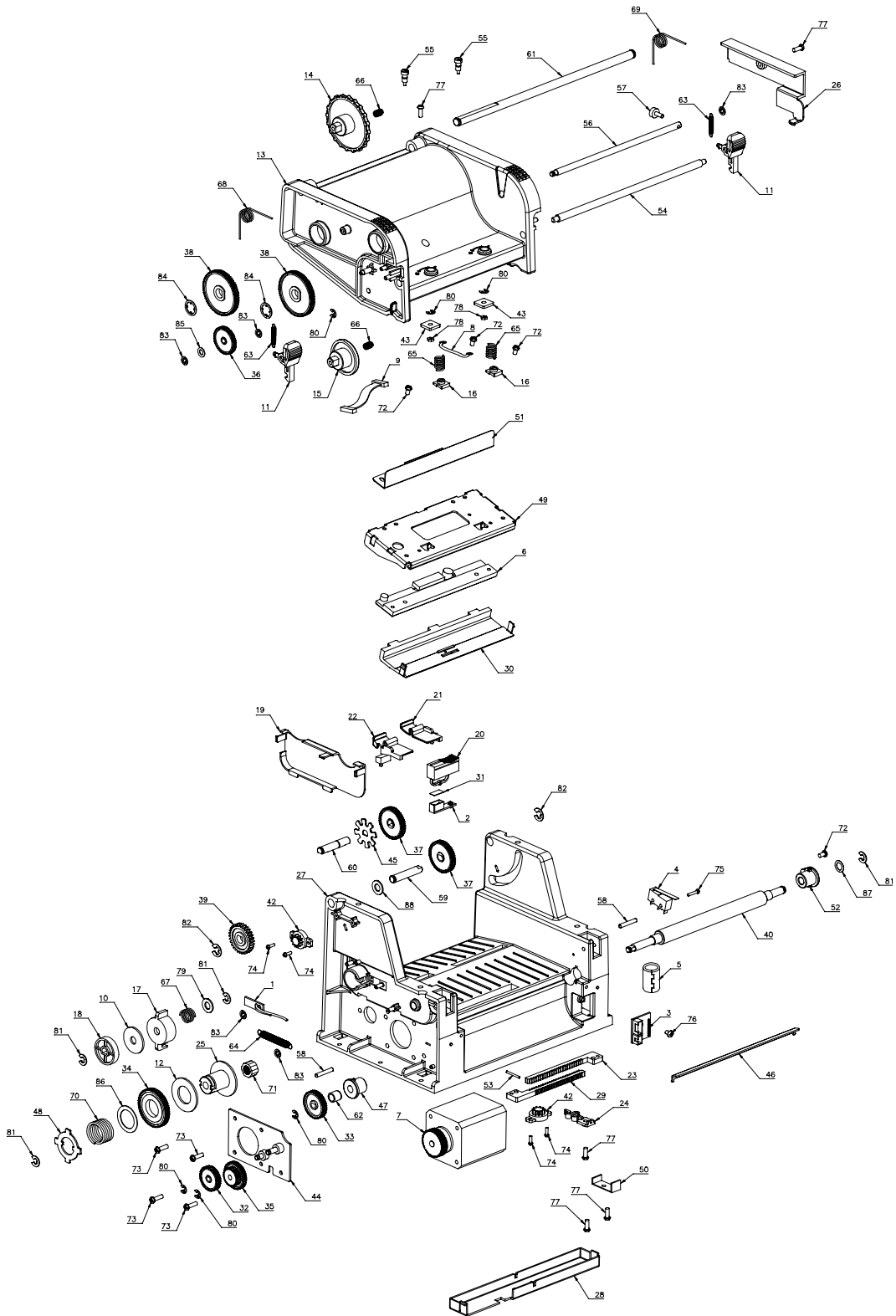
PART LIST TABLE

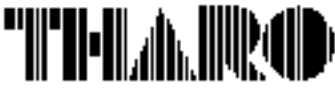
MODEL: V-433		Data: 9-23-03	REV.A	DWG No: 904-000171-00	
Item	No.	Part Name		Qty.	Remark
		V-433 Explode Diagram 300 dpi (Shell)			
1	131-EZ1300-00	Mechanism (300dpi) / V-433		1	
2	160-000129-00	Feed & LED PCB Assembly		1	
3	160-000131-00	Main PCB Assembly		1	
4	700-039100-00	Top Cover + Window		1	
5	700-039200-00	Bottom Case		1	
6	700-039300-00	Mid. Cover		1	
7	700-039600-00	Bottom Panel		1	
8	700-039700-00	Memory Cover		1	
9	700-039800-00	Switch Button (1)		1	
10	700-040000-00	LED Cover		2	
11	700-040200-00	Tear-Off Plate		1	
12	703-005800-00	Rubber Foot		4	
13	705-002500-00	Feed Cover Label (Green) / 300dpi		1	
14	711-038400-00	Hinge Pin		2	
15	730-013000-00	Installation Label		1	
16	731-013100-00	Rating Label		1	
17	801-430060-15	Mech. / P / NI / M3*6 (SPW Only)		1	
18	820-430120-15	Tapping Screw / P / NI / 3*12		2	
19	820-530080-55	Tapping Screw / P / NI / 3*8		3	
20	820-430120-15	E-RING ϕ 3.0* ϕ 7.0*0.6t		2	



Doc. No.	Revision	Date	Page
730-017100-00	A1		22 of 30

Exploded Diagram (Mechanism)

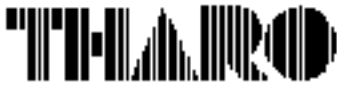




Doc. No.	Revision	Date	Page
730-017100-00	A1		23 of 30

PARTS LIST TABLE

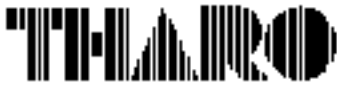
MODEL: V-426		Data : 9-23-03	REV.A	DWG No: 904-100171-00	
Item	No.	Part Name		Qty.	Remark
		V-426 Mechanism Part List			
		200 dpi (Shell)			
1	160-000045-20	Ribbon Sensor PCB Assembly		1	
2	160-000128-00	Label Sensor PCB Assembly		1	
3	160-000138-00	Option Adaptor PCB Assembly		1	
4	162-000010-00	Door Open SW Assembly		1	
5	442-000008-00	Ferrite Core CF-80T1 (B)		1	
6	460-000023-00	TPH/ KPC-108-8RAE1-GO		1	
7	462-030010-00	Steep ping Motor / KH42KM2		1	
8	601-000028-00	Y GEN Wire #18awg N450mm		1	
9	601-160001-00	P2-16P/2-2*13P #28 N400mm		1	
10	700-013200-00	Wool Fiber D20*6.2*1.0t □		1	
11	700-024700-00	Hook		2	
12	700-027500-00	Wool Fiber D24*15.3*0.2t		1	
13	700-036900-00	Print Frame		1	
14	700-037000-00	Ribbon Rewind Wheel		1	
15	700-037100-00	Ribbon Supply Wheel		1	
16	700-037200-00	TPH Spring Holder		2	
17	700-037300-00	Ribbon Return Cap		1	
18	700-037400-00	Friction Plate		1	
19	700-037500-00	Gear Cover		1	
20	700-037600-00	Sensor Case		1	
21	700-037700-00	Label Guide / R		1	
22	700-037800-00	Label Guide / L		1	
23	700-037900-00	Label Guide Gear Rack		1	
24	700-038000-00	Gear Stopper		1	
25	700-038300-00	One-Way Clutch Holder		1	
26	700-038400-00	Cable Cover		1	
27	700-038500-00	Base Frame		1	
28	700-038800-00	Gear Rack Cover		1	
29	700-038900-00	Label Guide Gear Rack Lock		1	
30	700-039000-00	TPH Cover		1	
31	700-041700-00	Sensor Dust Cover		1	



Doc. No.	Revision	Date	Page
730-017100-00	A1		24 of 30

MODEL: V-426**Data : 9-23-03****REV.A****DWG No: 904-100171-00**

Item	No.	Part Name	Qty.	Remark
		V-426 Mechanism Part List 200 dpi (Shell)		
32	701-000700-00	Spur Gear 40T*M0.5*4.0t	1	
33	701-000800-00	Spur Gear 45T*M0.5*4.0t	1	
34	701-000900-00	Spur Gear 64T*M0.5*4.0t(ID 15.05)	1	
35	701-001100-00	Double Gear 45/30T*M0.5*7.5t	1	
36	701-001101-00	Double Gear 45/30T*M0.5*7.5t(B)	1	
37	701-001301-00	Spur Gear 52T*M0.5*4.0t(B)	2	
38	701-003001-00	Gear 75T(Black)	2	
39	701-003100-00	Stopper Gear	1	
40	702-001500-00	Platen	1	
41	703-012500-00	Cable Ties (GT-75M) 75mm	3	
42	703-029300-00	Torque Gear PG-03A	2	
43	710-035100-00	TPH-P-Adjustment Plate	2	
44	710-035500-00	Motor Bracket (1.8°) 200dpi	1	
45	710-035700-00	Ribbon-out Plate	1	
46	710-035800-00	Strip Bar	1	
47	710-305900-00	Bearing	1	
48	710-036000-00	Holder Plate	1	
49	710-036100-00	TPH Bracket (K)	1	
50	710-040400-00	Gear Rack Holder	1	
51	710-041500-00	Ribbon Plate	1	
52	710-041700-00	Bearing (ESD)	1	
53	711-020200-00	Pin / SUS 301φ1.5	1	
54	711-036300-00	Hook Shaft	1	
55	711-036400-00	TPH-P-Adjustment Screw	2	
56	711-036500-00	TPH Shaft	1	
57	711-036600-00	TPH-L-Adjustment Screw	1	
58	711-036700-00	Hook Pin	2	
59	711-036800-00	Rewind Shaft	1	
60	711-036900-00	Supply Shaft	1	
61	711-037000-00	Print Frame Shaft	1	
62	711-040600-00	Copper Bushing	1	
63	712-003600-00	Extension Spring φ0.4*3.8*13L	2	



Doc. No.	Revision	Date	Page
730-017100-00	A1		25 of 30

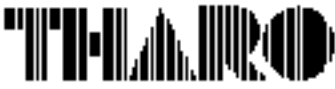
MODEL: V-426		Data : 9-23-03	REV.A	DWG No: 904-100171-00	
Item	No.	Part Name		Qty.	Remark
		V-426 Mechanism Part List			
		200 dpi (Shell)			
64	712-025900-00	Spring $\phi 0.4 \times 4.8 \times 35L$		1	
65	712-028600-00	TPH Spring		2	
66	712-028700-00	Ribbon Support Spring		2	
67	712-028800-00	Compress Spring 10L		1	
68	712-028900-00	Print Frame Support Spring (L)		1	
69	712-029000-00	Print Frame Support Spring (R)		1	
70	712-030400-00	Spring $\phi 1.6 \times 19.2 \times 24L \times 5N$		1	
71	713-020400-00	One-Way clutch		1	
72	801-430050-15	Mech. / P / NI / M3*5 (SPW ONLY)		4	
73	801-430100-15	Mech. / P / NI / M3*10 (SPW ONLY)		4	
74	820-420060-25	Tapping Screw /P/B/2*6		4	
75	820-420100-25	Tapping Screw /P/B/2.0*10		1	
76	820-426041-15	Tapping Screw /P/NI/2.6*4		1	
77	820-430080-25	Tapping Screw/P/B/3*8		5	
78	841-023451-10	NUT/NI/M2*3*P0.4*4.5*1.8t		2	
79	851-621310-00	Plane Washer $\phi 6.2 \times \phi 13 \times 1.0t$		1	
80	855-300706-00	E-ring $\phi 3.0 \times \phi 7.0 \times 0.6t$		6	
81	855-400906-00	E-ring $\phi 4.0 \times \phi 9.0 \times 0.6t$		4	
82	855-501106-00	E-ring $\phi 5.0 \times \phi 11 \times 0.6t$		2	
83	856-300705-00	O-ring $\phi 3.0 \times \phi 7.0 \times 0.5t$		5	
84	856-801302-00	O-ring $\phi 8.0 \times \phi 13.0 \times 0.25t$		2	
85	858-400805-00	Nylon $\phi 4.0 \times \phi 8.0 \times 0.5t$		1	
86	860-000001-00	Graphite Washer $\phi 23 \times \phi 15.2 \times 0.5t$		1	
87	860-000002-00	Graphite Washer $\phi 6.2 \times \phi 9.5 \times 0.5t$		1	
88	861-621010-00	PVC Washer $\phi 6.2 \times 10.0 \times 1.0t$		1	



Doc. No.	Revision	Date	Page
730-017100-00	A1		26 of 30

PART LIST TABLE

MODEL: V-433		Data : 9-23-03	REV.A	DWG No: 904-100171-00	
Item	No.	Part Name		Qty.	Remark
		V-433 Exploded Diagram 300 dpi (Shell)			
1	160-000045-20	Ribbon Sensor PCB Assembly		1	
2	160-000128-00	Label Sensor PCB Assembly		1	
3	160-000138-00	Option Adaptor PCB Assembly		1	
4	162-000010-00	Door Open SW Assembly		1	
5	442-000008-00	Ferrite Core CF-80T1 (B)		1	
6	460-000025-00	TPH/ KPC-106-12TA01-GO		1	
7	462-030010-00	Steep ping Motor / KH42KM2		1	
8	601-000028-00	Y GEN Wire #18awg N450mm		1	
9	601-260008-03	白 P2-26P/黒 2-2*13P #28 N400mm		1	
10	700-013200-00	Wool Fiber D20*6.2*1.0t □		1	
11	700-024700-00	Hook		2	
12	700-027500-00	Wool Fiber D24*15.3*0.2t		1	
13	700-036900-00	Print Frame		1	
14	700-037000-00	Ribbon Rewind Wheel		1	
15	700-037100-00	Ribbon Supply Wheel		1	
16	700-037200-00	TPH Spring Holder		2	
17	700-037300-00	Ribbon Return Cap		1	
18	700-037400-00	Friction Plate		1	
19	700-037500-00	Gear Cover		1	
20	700-037600-00	Sensor Case		1	
21	700-037700-00	Label Guide / R		1	
22	700-037800-00	Label Guide / L		1	
23	700-037900-00	Label Guide Gear Rack		1	
24	700-038000-00	Gear Stopper		1	
25	700-038300-00	One-Way Clutch Holder		1	
26	700-038400-00	Cable Cover		1	
27	700-038500-00	Base Frame		1	
28	700-038800-00	Gear Rack Cover		1	
29	700-038900-00	Label Guide Gear Rack Lock		1	
30	700-039000-00	TPH Cover		1	
31	700-041700-00	Sensor Dust Cover		1	



Doc. No.	Revision	Date	Page
730-017100-00	A1		27 of 30

MODEL: V-433**Data : 9-23-03****REV.A****DWG No: 904-100171-00**

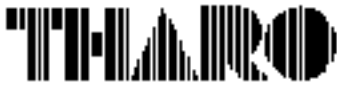
Item	No.	Part Name	Qty.	Remark
		V-433 Explode Diagram 300 dpi (Shell)		
32	701-000700-00	Spur Gear 40T*M0.5*4.0t	1	
33	701-000800-00	Spur Gear 45T*M0.5*4.0t	1	
34	701-000900-00	Spur Gear 64T*M0.5*4.0t(ID 15.05)	1	
35	701-001000-00	Double Gear 45/20T*M0.5*7.5t	1	
36	701-001100-00	Double Gear 45/30T*M0.5*7.5t	1	
37	701-001301-00	Spur Gear 52T*M0.5*4.0t(B)	2	
38	701-003001-00	Gear 75T(Black)	2	
39	701-003100-00	Stopper Gear	1	
40	702-001500-00	Platen	1	
41	703-012500-00	Cable Ties (GT-75M) 75mm	3	
42	703-029300-00	Torque Gear PG-03A	2	
43	710-035100-00	TPH-P-Adjustment Plate	2	
44	710-035600-00	Motor Bracket (1.8°) 300dpi	1	
45	710-035700-00	Ribbon-out Plate	1	
46	710-035800-00	Strip Bar	1	
47	710-305900-00	Bearing	1	
48	710-036000-00	Holder Plate	1	
49	710-036100-00	TPH Bracket (K)	1	
50	710-040400-00	Gear Rack Holder	1	
51	710-041500-00	Ribbon Plate	1	
52	710-041700-00	Bearing (ESD)	1	
53	711-020200-00	Pin / SUS 301φ1.5	1	
54	711-036300-00	Hook Shaft	1	
55	711-036400-00	TPH-P-Adjustment Screw	2	
56	711-036500-00	TPH Shaft	1	
57	711-036600-00	TPH-L-Adjustment Screw	1	
58	711-036700-00	Hook Pin	2	
59	711-036800-00	Rewind Shaft	1	
60	711-036900-00	Supply Shaft	1	
61	711-037000-00	Print Frame Shaft	1	
62	711-040600-00	Copper Bushing	1	
63	712-003600-00	Extension Spring φ0.4*3.8*13L	2	



Doc. No.	Revision	Date	Page
730-017100-00	A1		28 of 30

MODEL: V-433 Data : 9-23-03 REV.A DWG No: 904-100171-00

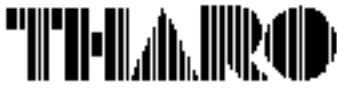
Item	No.	Part Name	Qty.	Remark
		V-433 Explode Diagram 300 dpi (Shell)		
64	712-025900-00	Spring $\phi 0.4 \times 4.8 \times 35L$	1	
65	712-028600-00	TPH Spring	2	
66	712-028700-00	Ribbon Support Spring	2	
67	712-028800-00	Compress Spring 10L	1	
68	712-028900-00	Print Frame Support Spring (L)	1	
69	712-029000-00	Print Frame Support Spring (R)	1	
70	712-030400-00	Spring $\phi 1.6 \times 19.2 \times 24L \times 5N$	1	
71	713-020400-00	One-Way clutch	1	
72	801-430050-15	Mech. / P / NI / M3*5 (SPW ONLY)	4	
73	801-430100-15	Mech. / P / NI / M3*10 (SPW ONLY)	4	
74	820-420060-25	Tapping Screw /P/B/2*6	4	
75	820-420100-25	Tapping Screw /P/B/2.0*10	1	
76	820-426041-15	Tapping Screw /P/NI/2.6*4	1	
77	820-430080-25	Tapping Screw/P/B/3*8	5	
78	841-023451-10	NUT/NI/M2*3*P0.4*4.5*1.8t	2	
79	851-621310-00	Plane Washer $\phi 6.2 \times \phi 13 \times 1.0t$	1	
80	855-300706-00	E-ring $\phi 3.0 \times \phi 7.0 \times 0.6t$	6	
81	855-400906-00	E-ring $\phi 4.0 \times \phi 9.0 \times 0.6t$	4	
82	855-501106-00	E-ring $\phi 5.0 \times \phi 11 \times 0.6t$	2	
83	856-300705-00	O-ring $\phi 3.0 \times \phi 7.0 \times 0.5t$	5	
84	856-801302-00	O-ring $\phi 8.0 \times \phi 13.0 \times 0.25t$	2	
85	858-400805-00	Nylon $\phi 4.0 \times \phi 8.0 \times 0.5t$	1	
86	860-000001-00	Graphite Washer $\phi 23 \times \phi 15.2 \times 0.5t$	1	
87	860-000002-00	Graphite Washer $\phi 6.2 \times \phi 9.5 \times 0.5t$	1	
88	861-621010-00	PVC Washer $\phi 6.2 \times 10.0 \times 1.0t$	1	



Doc. No.	Revision	Date	Page
730-017100-00	A1		29 of 30

V-426 / 200 DPI

Item	Part No.	Part Name	Q'TY	Note
1	160-000045-20	Ribbon Sensor PCB Ass'y	1	
2	160-000128-00	Label Sensor PCB Ass'y	1	
3	160-000138-00	Option Adaptor PCB Ass'y	1	
4	162-000010-00	Door Open SW Ass'y	1	
5	442-000008-00	Ferrite Core CF-80U1(B)	1	
6	460-000023-00	TPH / KPC-108-8TAE1-GO	1	***
7	462-030010-00	Stepping Motor / KH42KM2	1	***
8	601-000028-00	Y GND Wire #18AWG N450mm	1	
9	601-160001-00	白 P2-16P/黑 P2-2*13P #28 N400	1	***
10	700-013200-xx	Wool Fiber D20*6.2*1.0t	1	
11	700-024700-xx	Hook	2	
12	700-027500-xx	Wool Fiber D24*15.3*2.0t	1	
13	700-036900-xx	Print Frame	1	
14	700-037000-xx	Ribbon Rewind Wheel	1	
15	700-037100-xx	Ribbon Supply Wheel	1	
16	700-037200-xx	TPH Spring Holder	2	
17	700-037300-xx	Ribbon Return Cap	1	
18	700-037400-xx	Friction Plate	1	
19	700-037500-xx	Gear Cover	1	
20	700-037600-xx	Sensor Case	1	
21	700-037700-xx	Label Guide R	1	
22	700-037800-xx	Label Guide L	1	
23	700-037900-xx	Label Guide Gear Rack	1	
24	700-038000-xx	Gear Stopper	1	
25	700-038300-xx	One-way Clutch Holder	1	
26	700-038400-xx	Cabel Cover	1	
27	700-038500-xx	Base Frame	1	
28	700-038800-xx	Gear Rack Cover	1	
29	700-038900-xx	Label Guide Gear Rack Lock	1	
30	700-039000-xx	TPH Cover	1	
31	700-041700-xx	Sensor Dust Cover	1	
32	701-000700-xx	Spur Gear 40T*M0.5*4.0t	1	
33	701-000800-xx	Spur Gear 45T*M0.5*4.0t	1	
34	701-000900-xx	Gear 64T*M0.5*4.0t (ID 15.05)	1	
35	701-001100-xx	Double Gear 45/30T*M0.5*7.5t	1	***
36	701-001101-xx	Double Gear 45/30T*M0.5*7.5t (B)	1	***
37	701-001301-xx	Spur Gear 52T*M0.5*4.0t (B)	2	
38	701-003001-xx	Gear 75T (Black)	2	***
39	701-003100-xx	Stopper Gear	1	
40	702-001500-xx	Platen	1	
41	703-012500-00	Cable Ties (GT-75M) 75mm	3	
42	703-029300-00	Torque Gear PG-03A	2	
43	710-035100-xx	TPH-P-Adj Plate	2	
44	710-035500-xx	Motor Bracket (1.8φX) / 200dpi	1	***
45	710-035700-xx	Ribbon-out Plate	1	
46	710-035800-xx	Strip Bar	1	
47	710-035900-xx	Bearing	1	
48	710-036000-xx	Holder Plate	1	
49	710-036100-xx	TPH Bracket (K)	1	***
50	710-040400-xx	Gear Rack Holder	1	
51	710-041500-xx	Ribbon Plate	1	
52	710-041700-xx	Bearing (ESD)	1	
53	711-020200-xx	Pin / SUS 301 ? 1.5	1	
54	711-036300-xx	Hook Shaft	1	
55	711-036400-xx	TPH-P-Adj Screw	2	
56	711-036500-xx	TPH Shaft	1	
57	711-036600-xx	TPH-L-Adj Screw	1	
58	711-036700-xx	Hook Pin	2	
59	711-036800-xx	Rewind Shaft	1	
60	711-036900-xx	Supply Shaft	1	
61	711-037000-xx	Print Frame Shaft	1	
62	711-040600-xx	Copper Bushing	1	
63	712-003600-xx	Extension Spring ?0.4*4.8*13L	2	
64	712-025900-xx	Spring ?0.4*4.8*35L	1	
65	712-028600-xx	TPH Spring	2	***
66	712-028700-xx	Ribbon Support Spring	2	
67	712-028800-xx	Compress Spring 10L	1	
68	712-028900-xx	Print Frame Support Spring (L)	1	
69	712-029000-xx	Print Frame Support Spring (R)	1	
70	712-030400-xx	Spring ?1.6*19.2*24L*5N	1	
71	713-020400-00	One-way clutch	1	
72	801-430050-15	Mech/P/Ni/M 3*5(SPW Only)	4	
73	801-430100-15	Mech/P/Ni/M 3*10(SPW Only)	4	***
74	820-420060-25	Tapping Screw /P/B/2*6	4	
75	820-420100-25	Tapping Screw /P/B/2.0*10	1	
76	820-426041-15	Tapping Screw /P/Ni/2.6*4	1	
77	820-430080-25	Tapping Screw /P/B/3*8	5	
78	841-023451-10	NUT/Ni/M 2.3*P0.4*4.5*1.8t	2	
79	851-621310-00	Plane Washer ?6.2*?13*1.0t	1	
80	855-300706-00	E-ring ?3.0*?7.0*0.6t	6	
81	855-400906-00	E-ring ?4.0*?9.0*0.6t	4	
82	855-501106-00	E-ring ?5.0*?11*0.6t	2	
83	856-300705-00	O-ring ?3.0*?7.0*0.5t	5	
84	856-801302-00	O-ring ?8.0*?13.0*0.25t	2	
85	858-400805-00	Nylon ?4.0*?8.0*0.5t	1	
86	860-000001-00	Graphite Washer ?23*?15.2*0.5t	1	
87	860-000002-00	Graphite Washer ?6.2*?9.5*0.5t	1	
88	861-621010-00	PVC Washer ?6.2*?10.0*1.0t	1	



Doc. No.	Revision	Date	Page
730-017100-00	A1		30 of 30

V-433 / 300 DPI

Item	Part No.	Part Name	Q'TY	Note
1	160-000045-20	Ribbon Sensor PCB Ass'y	碳帶偵測組合板	1
2	160-000128-00	Label Sensor PCB Ass'y	標籤偵測組合板	1
3	160-000138-00	Option Adaptor PCB Ass'y	轉接板組合	1
4	162-000010-00	Door Open SW Ass'y	微動開關加工	1
5	442-000008-00	Ferrite Core CF-80U1(B)	夾扣	1
6	460-000025-00	TPH / KPC-106-12TAO1-GO	印表頭 /300dpi (Kyocera)	1
7	462-030010-00	Stepping Motor / KH42KM2	步進馬達 (KH42KM2)	1
8	601-000028-00	Y GND Wire #18AWG N450mm	Y地線 #18AWG N450mm	1
9	601-260008-03	白P2-26P/黑P2-2*13P #28 N400	白P2-26P/黑P2-2*13P #28 N400	1
10	700-013200-xx	Wool Fiber D20*6.2*1.0t	小羊毛氈 D20*6.2*1.0t	1
11	700-024700-xx	Hook	按鍵卡勾	2
12	700-027500-xx	Wool Fiber D24*15.3*2.0t	厚羊毛氈 D24*15.3*2.0t	1
13	700-036900-xx	Print Frame	列印架	1
14	700-037000-xx	Ribbon Rewind Wheel	碳帶回收輪	1
15	700-037100-xx	Ribbon Supply Wheel	碳帶供應輪	1
16	700-037200-xx	TPH Spring Holder	印表頭彈簧定位柱	2
17	700-037300-xx	Ribbon Return Cap	碳帶回收盤	1
18	700-037400-xx	Friction Plate	磨擦盤	1
19	700-037500-xx	Gear Cover	齒輪遮蓋	1
20	700-037600-xx	Sensor Case	偵測器盒	1
21	700-037700-xx	Label Guide R	標籤調整桿 /右	1
22	700-037800-xx	Label Guide L	標籤調整桿 /左	1
23	700-037900-xx	Label Guide Gear Rack	標籤調整齒條	1
24	700-038000-xx	Gear Stopper	齒輪滯動件	1
25	700-038300-xx	One-way Clutch Holder	單向軸承座	1
26	700-038400-xx	Cabel Cover	線材遮蓋	1
27	700-038500-xx	Base Frame	主機架	1
28	700-038800-xx	Gear Rack Cover	齒條遮板	1
29	700-038900-xx	Label Guide Gear Rack Lock	標籤調整齒條扣件	1
30	700-039000-xx	TPH Cover	印表頭遮蓋	1
31	700-041700-xx	Sensor Dust Cover	偵測盒防塵片	1
32	701-000700-xx	Spur Gear 40T*M0.5*4.0t	平齒輪 40T*M0.5*4.0t	1
33	701-000800-xx	Spur Gear 45T*M0.5*4.0t	平齒輪 45T*M0.5*4.0t	1
34	701-000900-xx	Gear 64T*M0.5*4.0t (ID 15.05)	平齒輪 45T*M0.5*4.0t (ID15.05)	1
35	701-001000-xx	Double Gear 45/20T*M0.5*7.5t	複合齒輪 45/20T*M0.5*7.5t	1
36	701-001100-xx	Double Gear 45/30T*M0.5*7.5t	複合齒輪 45/30T*M0.5*7.5t	1
37	701-001301-xx	Spur Gear 52T*M0.5*4.0t (B)	平齒輪 52T*M0.5*4.0t (黑)	2
38	701-003000-xx	Gear 75T	平齒輪 75T	2
39	701-003100-xx	Stopper Gear	定位齒輪	1
40	702-001500-xx	Platen	橡膠滾輪	1
41	703-012500-00	Cable Ties (GT-75M) 75mm	束線帶 75mm	3
42	703-029300-00	Torque Gear PG-03A	扭力齒輪 / PG-03A	2
43	710-035100-xx	TPH -P-Adj Plate	印表頭壓力調整板	2
44	710-035600-xx	Motor Bracket (1.8φX) / 300dpi	馬達支架 (1.8") / 300dpi	1
45	710-035700-xx	Ribbon-out Plate	碳帶偵測鐵片	1
46	710-035800-xx	Strip Bar	剝紙桿	1
47	710-035900-xx	Bearing	滾輪套筒	1
48	710-036000-xx	Holder Plate	固定墊片	1
49	710-036100-xx	TPH Bracket (K)	印表頭支架 (K)	1
50	710-040400-xx	Gear Rack Holder	齒條固定件	1
51	710-041500-xx	Ribbon Plate	碳帶導片	1
52	710-041700-xx	Bearing (ESD)	滾輪套筒 (ESD)	1
53	711-020200-xx	Pin / SUS 301 ? 1.5	定位銷	1
54	711-036300-xx	Hook Shaft	卡勾定位軸	1
55	711-036400-xx	TPH -P-Adj Screw	印表頭壓力調整螺絲	2
56	711-036500-xx	TPH Shaft	印表頭定位軸	1
57	711-036600-xx	TPH -L-Adj Screw	印表頭列印線調整螺絲	1
58	711-036700-xx	Hook Pin	卡勾定位銷	2
59	711-036800-xx	Rewind Shaft	碳帶回收鋼軸	1
60	711-036900-xx	Supply Shaft	碳帶供應鋼軸	1
61	711-037000-xx	Print Frame Shaft	列印架轉軸	1
62	711-040600-xx	Copper Bushing	銅套	1
63	712-003600-xx	Extension Spring ?0.4*3.8*13L	卡勾彈簧	2
64	712-025900-xx	Spring ?0.4*4.8*35L	碳帶回收彈簧	1
65	712-028600-xx	TPH Spring	印表頭彈簧	2
66	712-028700-xx	Ribbon Support Spring	碳帶軸頂出彈簧	2
67	712-028800-xx	Compress Spring 10L	壓縮彈簧 10L	1
68	712-028900-xx	Print Frame Support Spring (L)	列印架支撐彈簧 (左)	1
69	712-029000-xx	Print Frame Support Spring (R)	列印架支撐彈簧 (右)	1
70	712-030400-xx	Spring ?1.6*19.2*24L*5N	壓縮彈簧 ?1.6*19.2*24L*5N	1
71	713-020400-00	One-way clutch	單向軸承	1
72	801-430050-15	Mech/P/Ni/M 3*5 (SPW Only)	機械螺絲 M3*5/附彈簧墊圈	4
73	801-430100-15	Mech/P/Ni/M 3*10 (SPW Only)	機械螺絲 M3*10/附彈簧墊圈	4
74	820-420060-25	Tapping Screw /P/B/2*6	自攻螺絲 2*6黑色束尾	4
75	820-420100-25	Tapping Screw /P/B/2.0*10	自攻螺絲 2.0*10黑色束尾	1
76	820-426041-15	Tapping Screw /P/Ni/2.6*4	自攻螺絲 2.6*4綠色束尾	1
77	820-430080-25	Tapping Screw /P/B/3*8	自攻螺絲 3*8黑色束尾	5
78	841-023451-10	NUT/Ni/M 2.3*P0.4*4.5*1.8t	六角螺帽 M2.3*P0.4*4.5*1.8t	1
79	851-621310-00	Plane Washer ?6.2*?13*1.0t	平華司 ?6.2*?13*1.0t	2
80	855-300706-00	E-ring ?3.0*?7.0*0.6t	E型止動環 ?3.0*?7.0*0.6t	6
81	855-400906-00	E-ring ?4.0*?9.0*0.6t	E型止動環 ?4.0*?9.0*0.6t	4
82	855-501106-00	E-ring ?5.0*?11*0.6t	E型止動環 ?5.0*?11*0.6t	2
83	856-300705-00	O-ring ?3.0*?7.0*0.5t	O型止動環 ?3.0*?7.0*0.5t	5
84	856-801302-00	O-ring ?8.0*?13.0*0.25t	O型止動環 ?8.0*?13.0*0.25t	2
85	858-400805-00	Nylon ?4.0*?8.0*0.5t	塑膠華司 ?4.0*?8.0*0.5t	1
86	860-000001-00	Graphite Washer ?23*?15.2*0.5t	石墨華司 ?23*?15.2*0.5t	1
87	860-000002-00	Graphite Washer ?6.2*?9.5*0.5t	石墨華司 ?6.2*?9.5*0.5t	1
88	861-621010-00	PVC Washer ?6.2*?10.0*1.0t	PVC華司 ?6.2*?10.0*1.0t	1