



# **R-412 LABEL REWINDER**

## **USER'S GUIDE**

# **CONTENTS**

## **1 BOX CONTENTS**

## **2 GETTING TO KNOW YOUR REWINDER**

**Device Overview**

## **3 REWINDER SETUP**

**Connection**

**Loading Labels**

**Rewinding modes**

## **4 REWINDER STATUS**

**LED Indicator**

**When The Rewinder Is Full**

## **5 TROUBLESHOOTING**

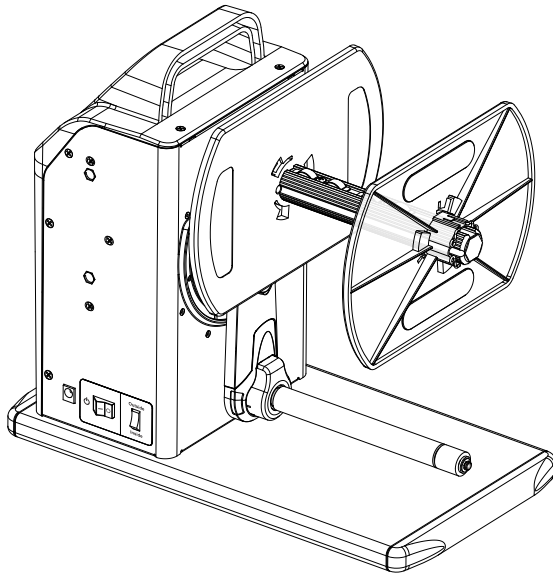
**Sensing Error**

**Idle Load**

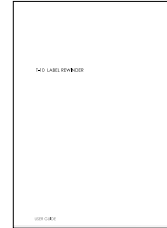
## **PRODUCT SPECIFICATIONS**

# 1 BOX CONTENTS

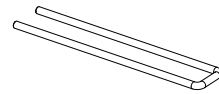
- Label Rewinder



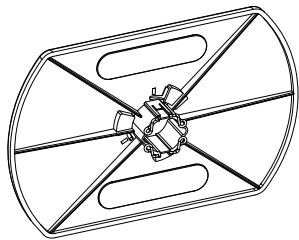
- User Guide



- Clip



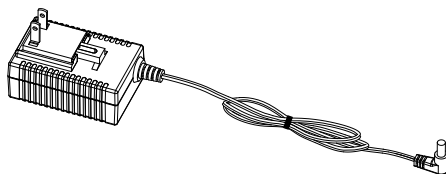
- Paper Stop Plate



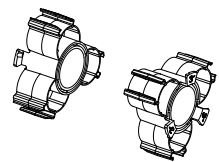
- 1.5'' Adapter



- Power Adapter



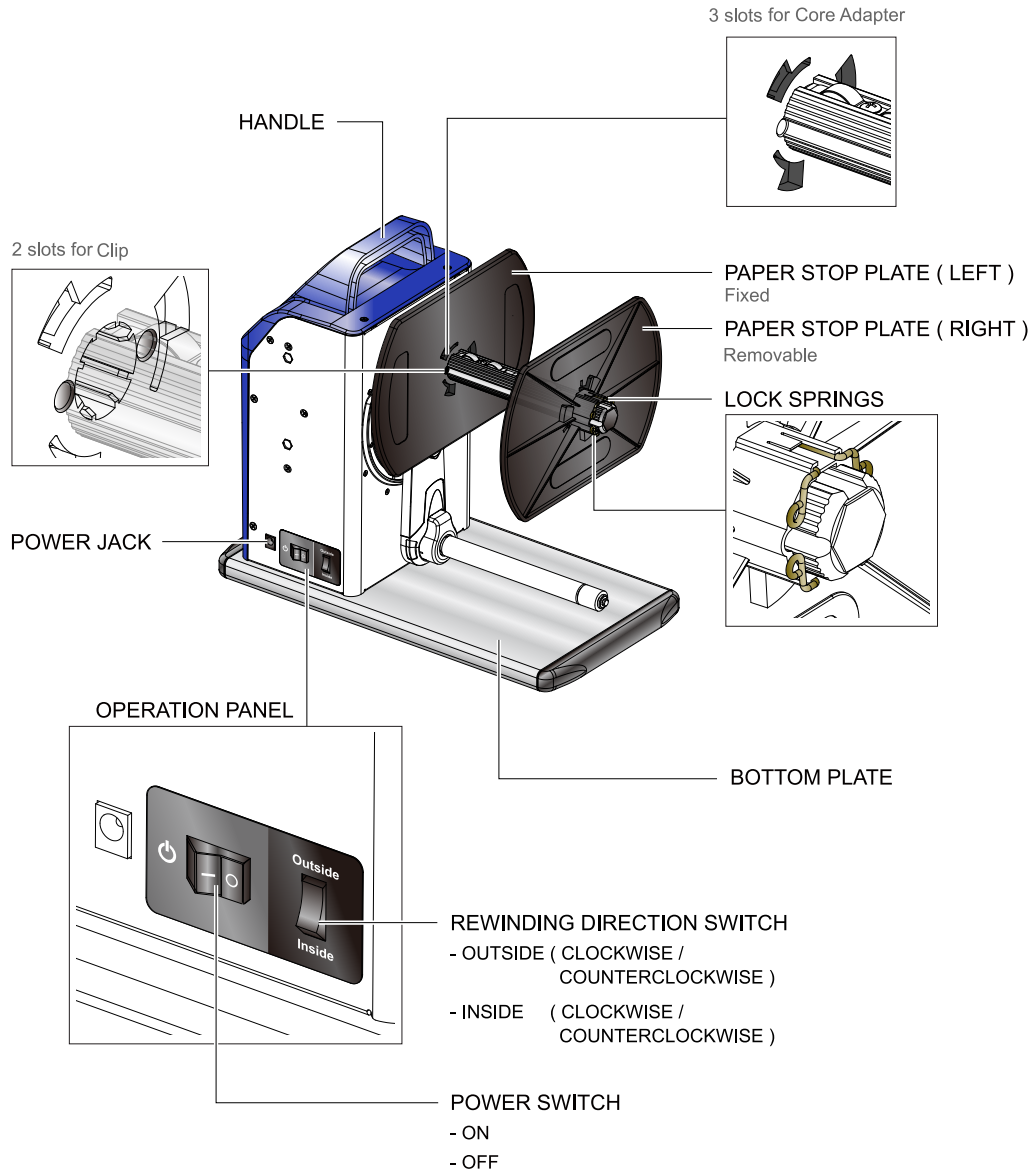
- 3'' Adapter



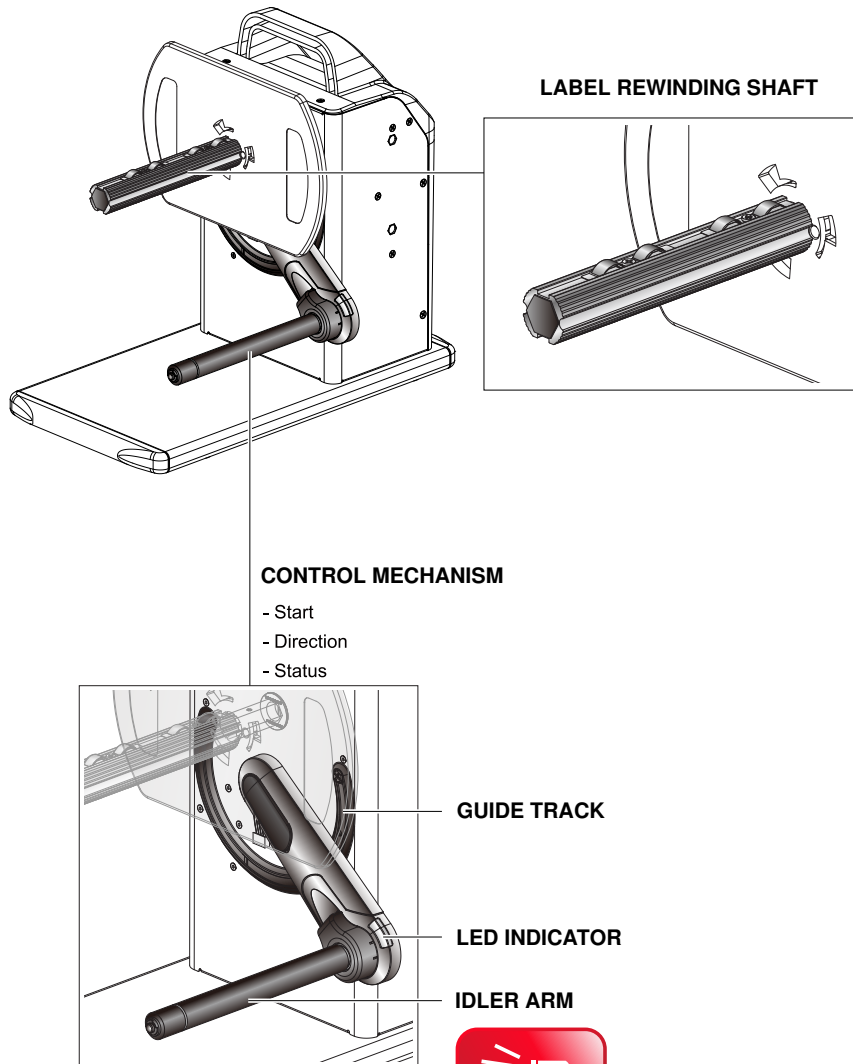
## 2 GETTING TO KNOW YOUR REWINDER

### Device Overview

- Front View



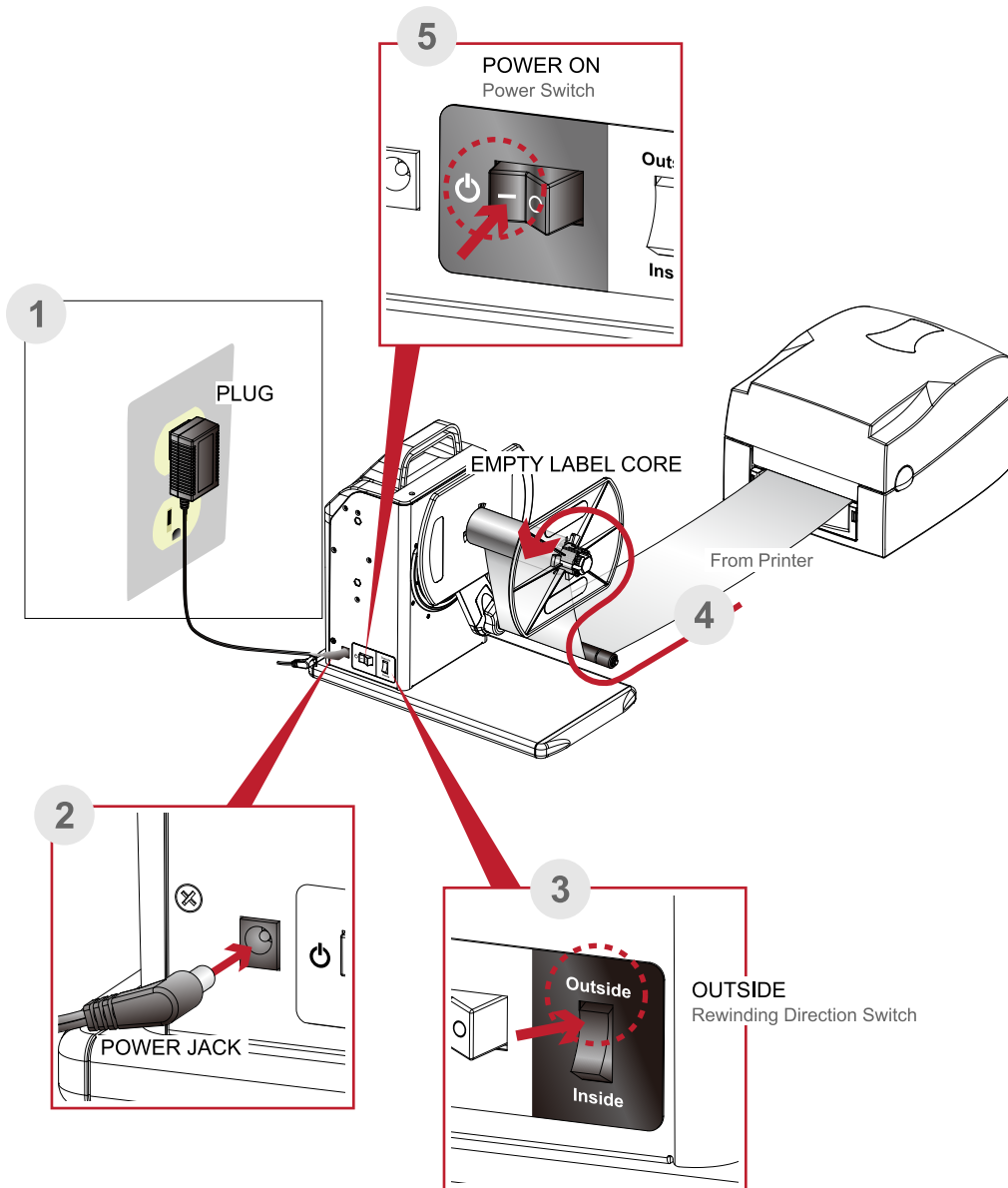
- Rear View



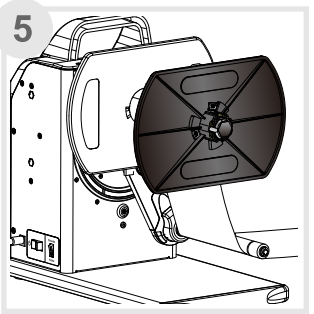
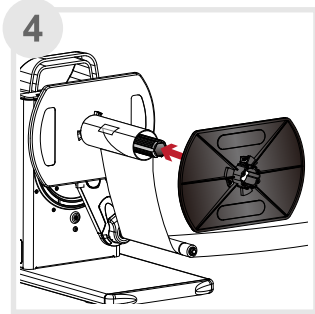
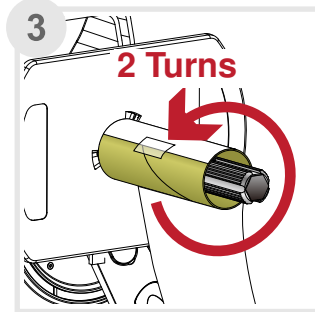
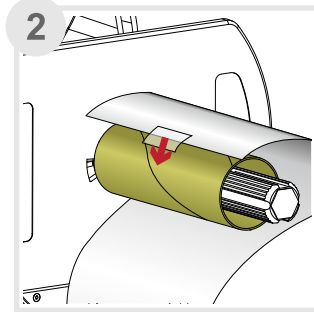
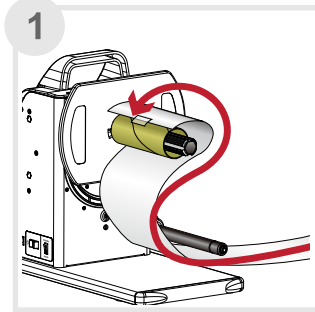
**Keep Clean**

# 3 REWINDER SETUP

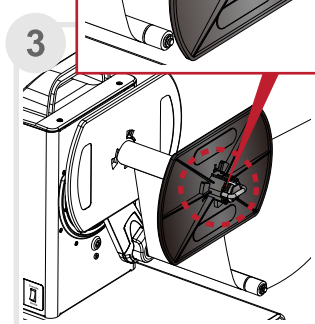
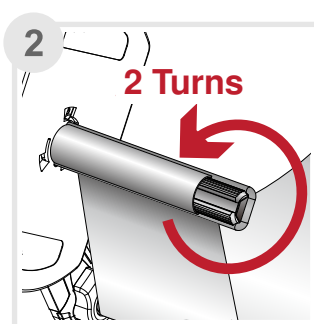
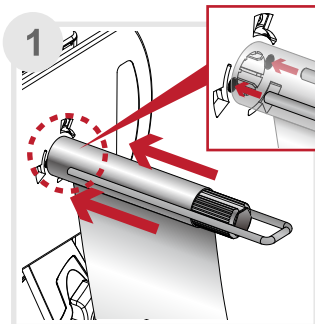
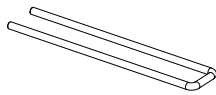
## Connection



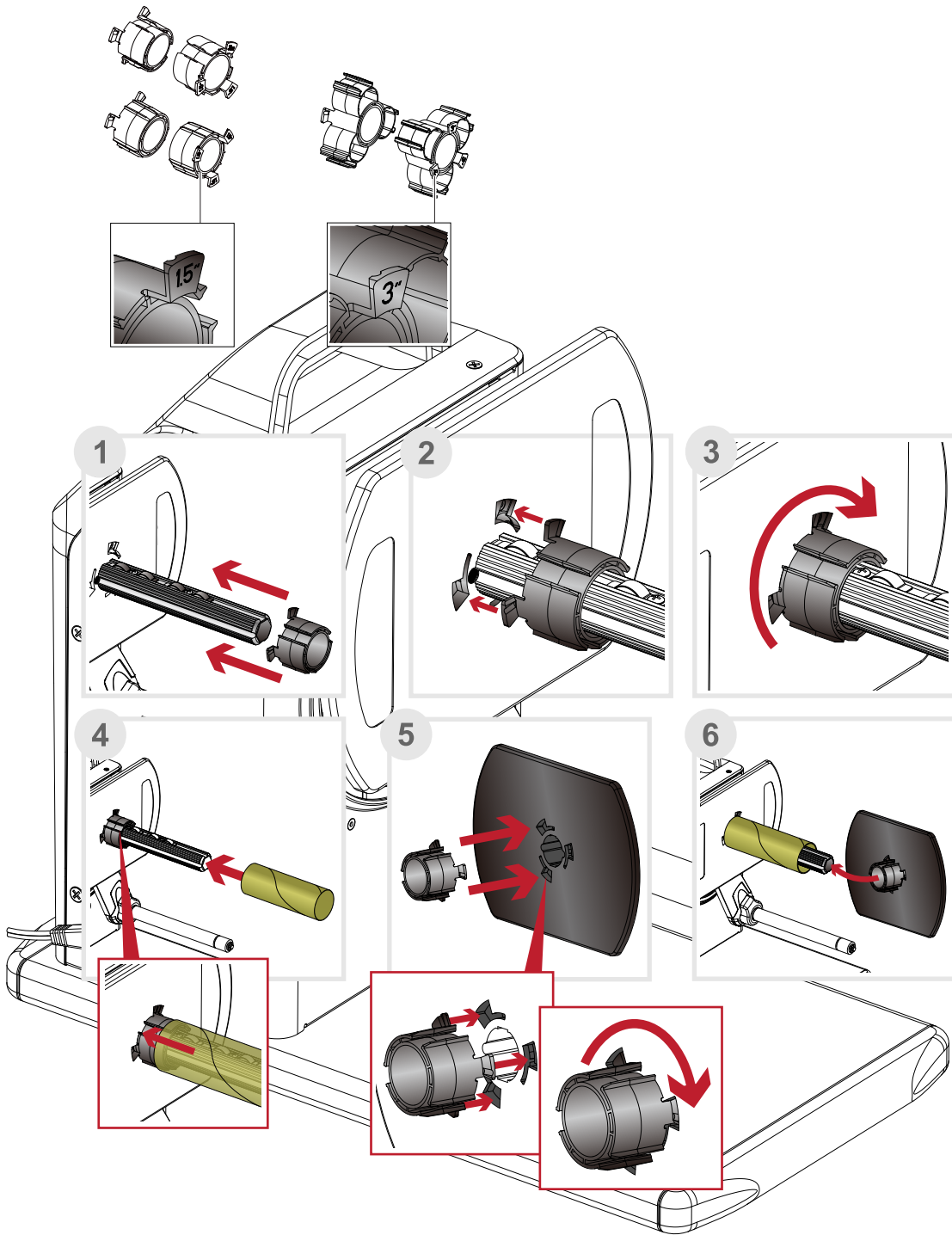
## Loading Labels



Clip  
for 1"

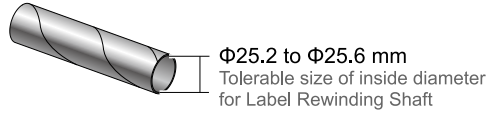
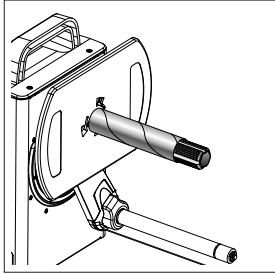


Core Adapter  
for 1.5" and 3"

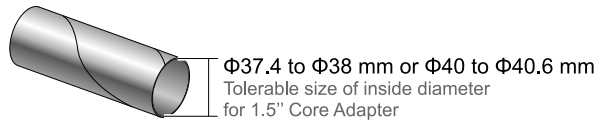
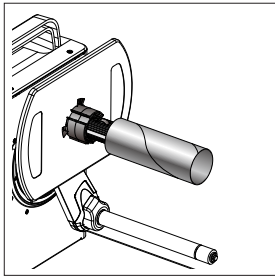




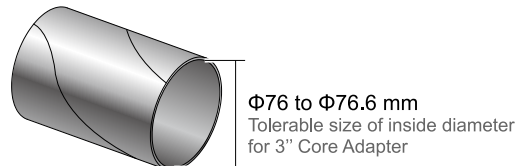
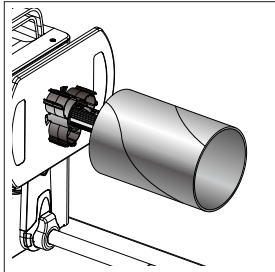
1'' Empty Label Core  
with Label rewinding shaft.



1.5'' Empty Label Core  
with 1.5'' Core adapter.

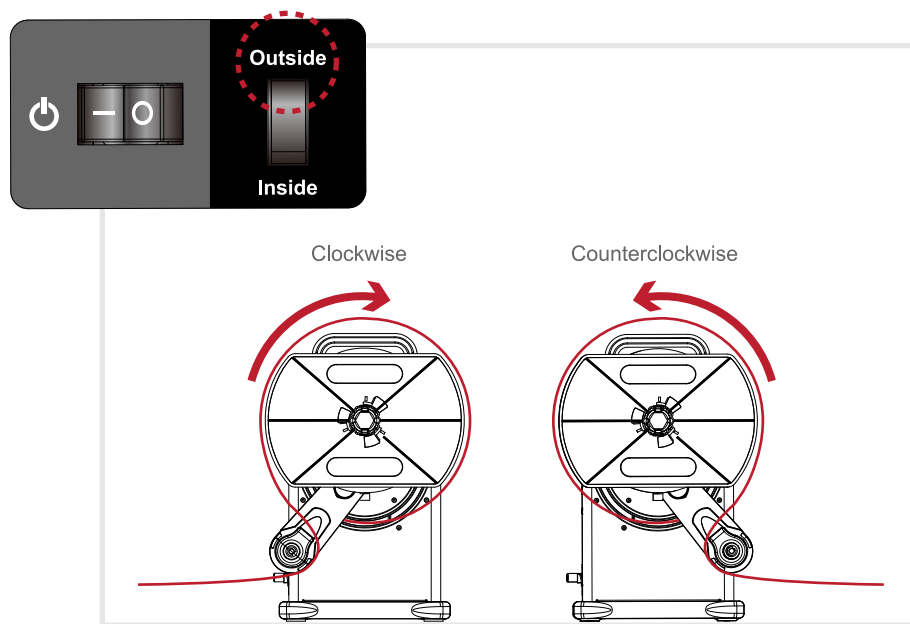


3'' Empty Label Core  
with 3'' Core adapter.

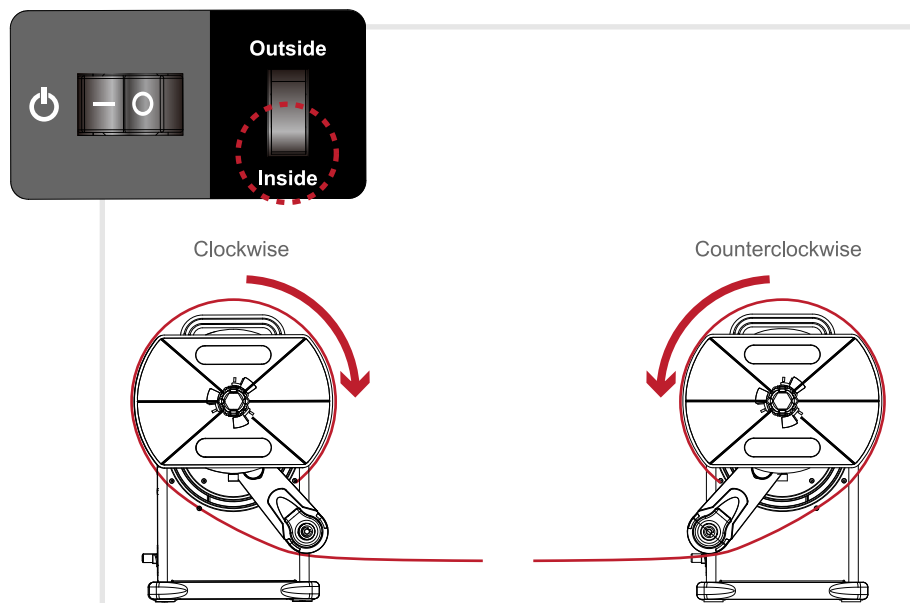


## Rewinding Modes

Outside

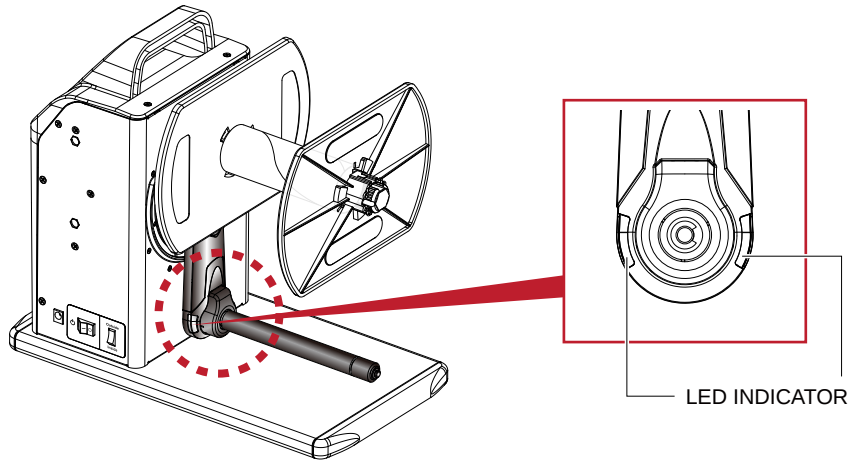


Inside



# 4 REWINDER STATUS

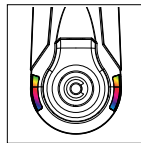
## LED Indicator



STATUS

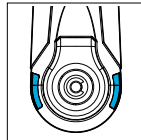
LED INDICATOR

Power ON



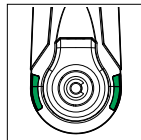
Flash

Outside



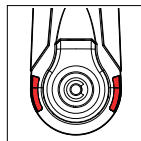
Blue

Inside

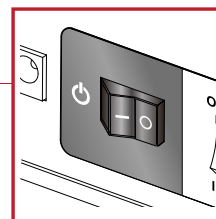


Green

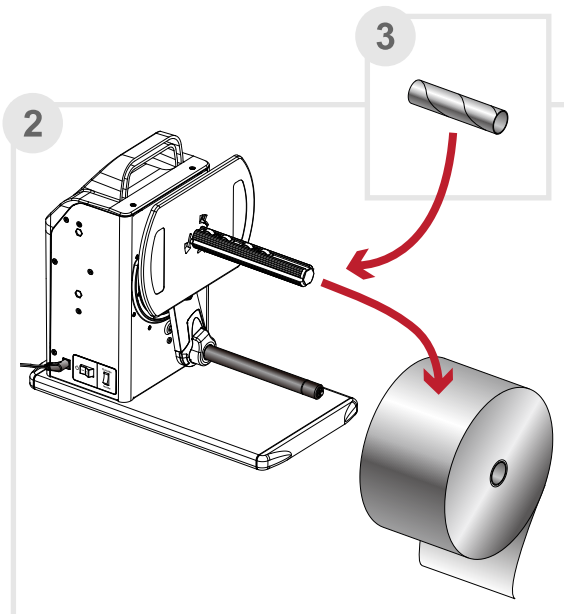
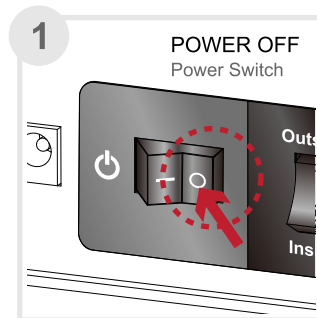
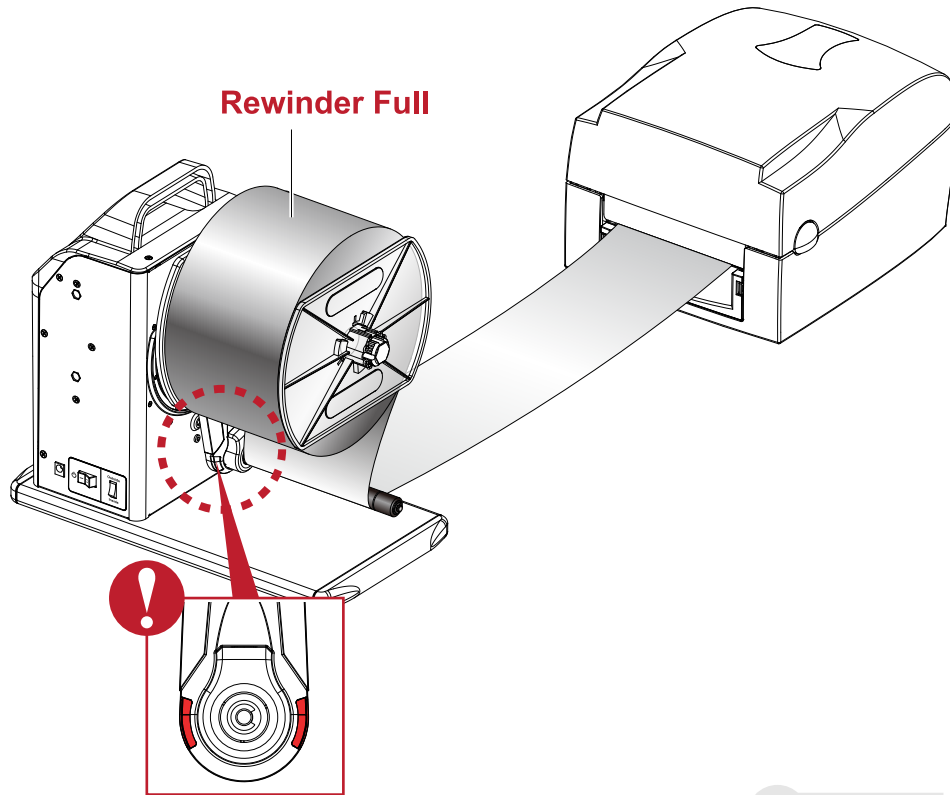
Error / Alert



Red

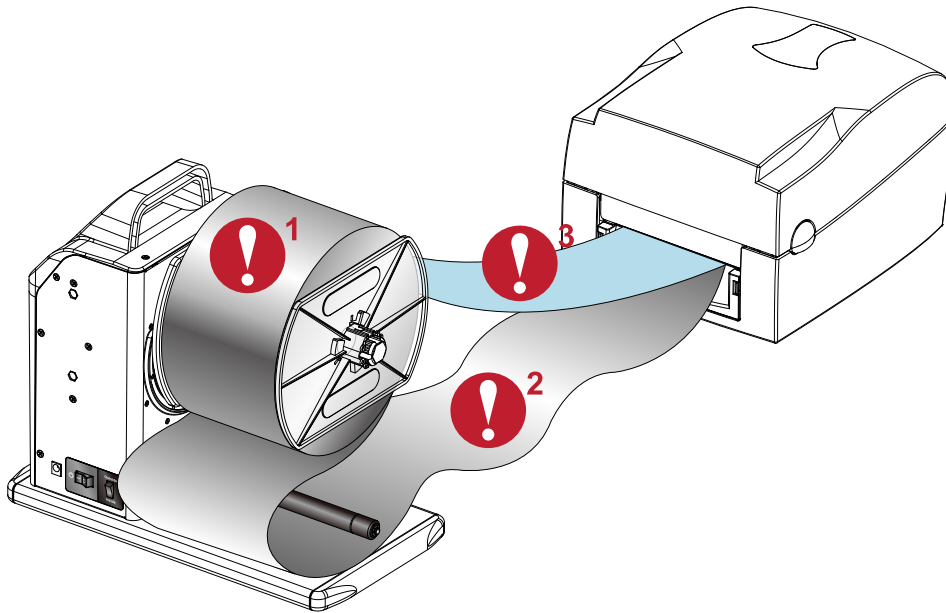


## When The Rewinder Is Full



## 5 TROUBLESHOOTING

Error / Alert



Error /Alert

Description



Paper Full  
refer to "When The Rewinder Is Full"

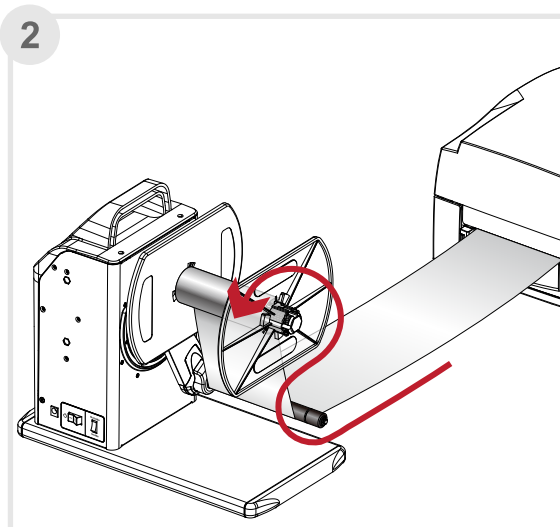
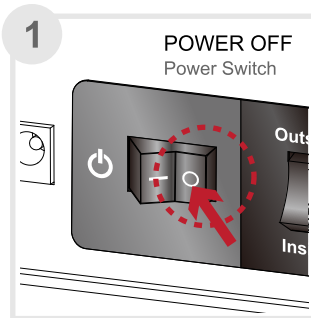
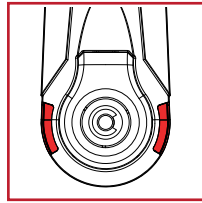
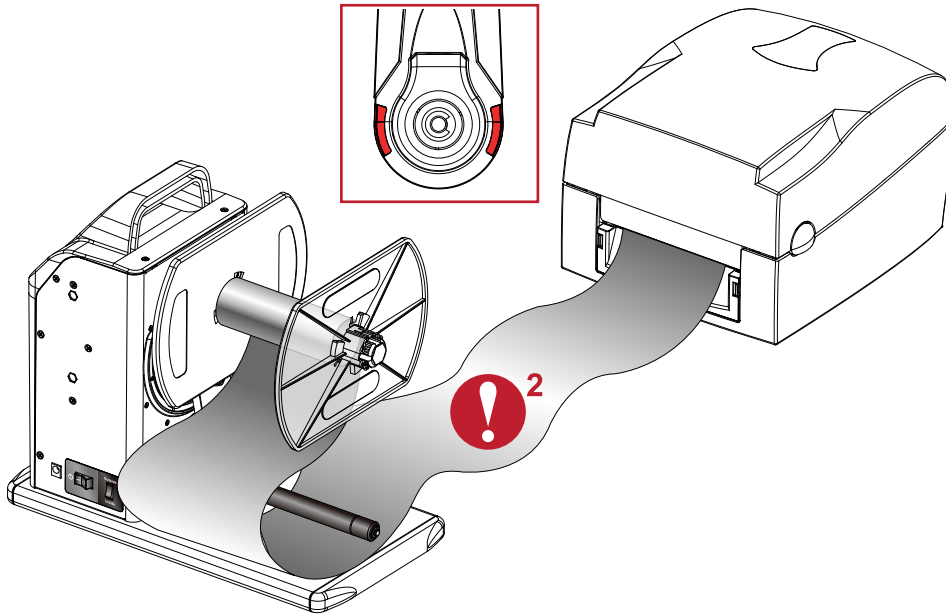


Sensing Error  
refer to "Sensing Error"

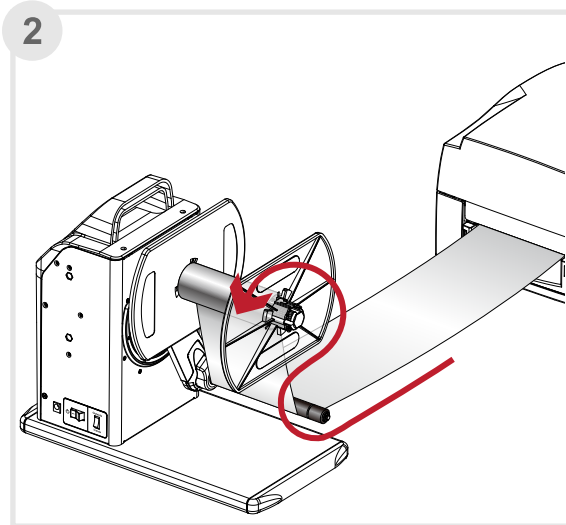
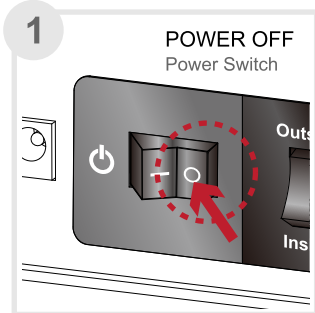
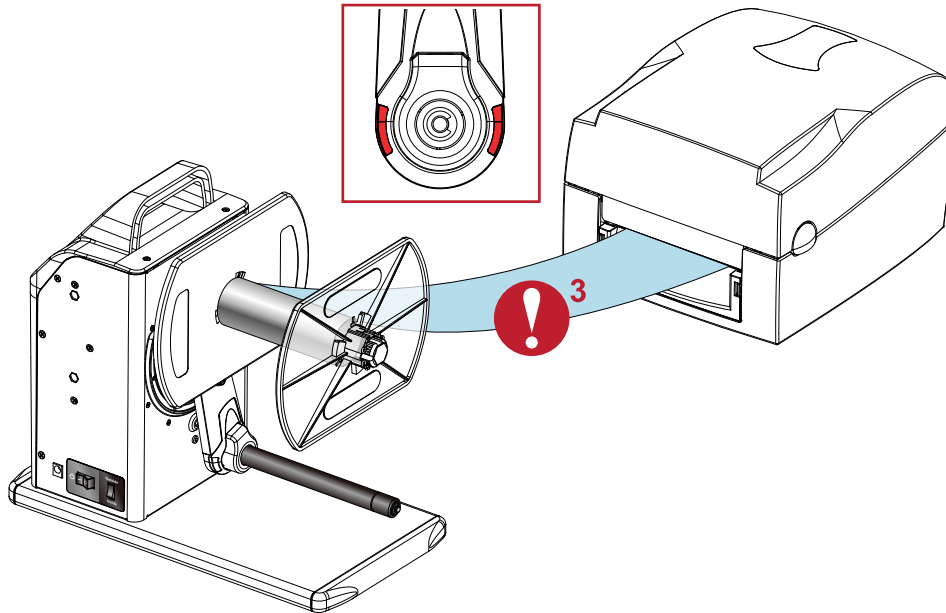


Idle Load  
refer to "Idle Load"

**2**  Sensing Error



**3**  Idle Load



# PRODUCT SPECIFICATIONS

---

<b>Model</b>	R-412
<b>Paper Width</b>	4.72" (119.89 mm) Maximum
<b>Rewind Speed</b>	12 IPS (305mm/s)
<b>Label Roll Diameter</b>	8" (203mm) Maximum
<b>Core Diameter</b>	1" (25.2mm - 25.6mm), 1.5" (40mm - 40.6mm), 3" (76mm - 76.6mm)
<b>Label Roll Weight</b>	11lb (5Kg)
<b>Rewinding</b>	Labels Inside or Labels Outside
<b>Switches</b>	Rewind Control
<b>Motor</b>	Hybrid Motor
<b>Power</b>	100 - 240 VAC 24W, 24V Adapter
<b>Environment</b>	Operating Temperature: 41° F to 104° F (5° C to 40° C) Storage Temperature: -4° F to 122° F (-20° C to 60° C)
<b>Humidity</b>	10% - 85% non-condensing
<b>Dimensions (H x W x D)</b>	12" (303mm) X 7" (180mm) X 13.7" (349mm)
<b>Agency Approvals</b>	CE, FCC Class A
<b>Weight</b>	11lb (5Kg)
<b>Warranty</b>	2 Years

\* Specifications are subject to change without notice. All company and/or product names are trademarks and/or registered trademarks of their respective owners.



**Tharo Systems, Inc.**  
**2866 Nationwide Parkway**  
**PO Box 798**  
**Brunswick, Ohio 44212-0798**

**Phone: (330) 273-4408**  
**Fax: (330) 225-0099**  
**E-mail: [printersupport@tharo.com](mailto:printersupport@tharo.com)**  
**<http://www.tharo.com>**